

PMM2 antibody - N-terminal region

Rabbit Polyclonal Antibody

Catalog # AI15040

Product Information

Application	WB
Primary Accession	O15305
Other Accession	NM_000303 , NP_000294
Reactivity	Human, Mouse, Rat, Rabbit, Pig, Dog, Guinea Pig, Horse, Bovine
Predicted	Human, Mouse, Rat, Rabbit, Chicken, Dog, Bovine
Host	Rabbit
Clonality	Polyclonal
Calculated MW	28082

Additional Information

Gene ID	5373
Alias Symbol	CDG1, CDG1a, CDGS, PMM 2
Other Names	Phosphomannomutase 2, PMM 2, 5.4.2.8, PMM2
Format	Liquid. Purified antibody supplied in 1x PBS buffer with 0.09% (w/v) sodium azide and 2% sucrose.
Reconstitution & Storage	Add 50 ul of distilled water. Final anti-PMM2 antibody concentration is 1 mg/ml in PBS buffer with 2% sucrose. For longer periods of storage, store at 20°C. Avoid repeat freeze-thaw cycles.
Precautions	PMM2 antibody - N-terminal region is for research use only and not for use in diagnostic or therapeutic procedures.

Protein Information

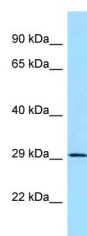
Name	PMM2
Function	Involved in the synthesis of the GDP-mannose and dolichol-phosphate-mannose required for a number of critical mannosyl transfer reactions.
Cellular Location	Cytoplasm.

References

Matthijs G., et al. Nat. Genet. 16:88-92(1997).

Matthijs G.,et al.Nat. Genet. 16:316-316(1997).
Schollen E.,et al.Hum. Mol. Genet. 7:157-164(1998).
Ota T.,et al.Nat. Genet. 36:40-45(2004).
Martin J.,et al.Nature 432:988-994(2004).

Images



WB Suggested Anti-PMM2 Antibody Titration: 1.0 µg/ml
Positive Control: Fetal Brain

Please note: All products are 'FOR RESEARCH USE ONLY. NOT FOR USE IN DIAGNOSTIC OR THERAPEUTIC PROCEDURES'.