

# FCGR1A Antibody - C-terminal region

Rabbit Polyclonal Antibody

Catalog # AI15043

## Product Information

---

<b>Application</b>	WB
<b>Primary Accession</b>	<a href="#">P12314</a>
<b>Other Accession</b>	<a href="#">NM_000566</a> , <a href="#">NP_000557</a>
<b>Reactivity</b>	Human, Yeast
<b>Predicted</b>	Human, Yeast
<b>Host</b>	Rabbit
<b>Clonality</b>	Polyclonal
<b>Calculated MW</b>	42632

## Additional Information

---

<b>Gene ID</b>	2209
<b>Alias Symbol</b>	CD64, CD64A, FCRI, FLJ18345, IGFR1
<b>Other Names</b>	High affinity immunoglobulin gamma Fc receptor I, IgG Fc receptor I, Fc-gamma RI, FcRI, Fc-gamma RIA, FcgammaRIa, CD64, FCGR1A, FCG1, FCGR1, IGFR1
<b>Format</b>	Liquid. Purified antibody supplied in 1x PBS buffer with 0.09% (w/v) sodium azide and 2% sucrose.
<b>Reconstitution &amp; Storage</b>	Add 50 ul of distilled water. Final anti-FCGR1A antibody concentration is 1 mg/ml in PBS buffer with 2% sucrose. For longer periods of storage, store at 20°C. Avoid repeat freeze-thaw cycles.
<b>Precautions</b>	FCGR1A Antibody - C-terminal region is for research use only and not for use in diagnostic or therapeutic procedures.

## Protein Information

---

<b>Name</b>	FCGR1A
<b>Synonyms</b>	FCG1, FCGR1, IGFR1
<b>Function</b>	High affinity receptor for the Fc region of immunoglobulins gamma. Functions in both innate and adaptive immune responses. Mediates IgG effector functions on monocytes triggering antibody-dependent cellular cytotoxicity (ADCC) of virus-infected cells.
<b>Cellular Location</b>	Cell membrane; Single-pass type I membrane protein Note=Stabilized at the cell membrane through interaction with FCER1G

## Tissue Location

Monocyte/macrophage specific.

## References

---

Allen J.M.,et al.Nucleic Acids Res. 16:11824-11824(1988).

Allen J.M.,et al.Science 243:378-381(1989).

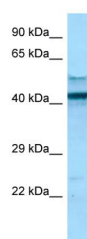
Porges A.J.,et al.J. Clin. Invest. 90:2102-2109(1992).

Benech P.D.,et al.J. Exp. Med. 176:1115-1123(1992).

Gregory S.G.,et al.Nature 441:315-321(2006).

## Images

---



WB Suggested Anti-FCGR1A Antibody Titration: 1.0 µg/ml  
Positive Control: NCI-H226 Whole Cell.FCGR1A is strongly supported by BioGPS gene expression data to be expressed in NCI-H226

Please note: All products are 'FOR RESEARCH USE ONLY. NOT FOR USE IN DIAGNOSTIC OR THERAPEUTIC PROCEDURES'.