

STRA8 antibody - C-terminal region

Rabbit Polyclonal Antibody

Catalog # AI15045

Product Information

Application	WB
Primary Accession	Q7Z7C7
Other Accession	NM_182489 , NP_872295
Reactivity	Human, Pig, Dog
Predicted	Human, Pig, Dog
Host	Rabbit
Clonality	Polyclonal
Calculated MW	36908

Additional Information

Gene ID	346673
Other Names	Stimulated by retinoic acid gene 8 protein homolog, STRA8 {ECO:0000312 EMBL:AAP47163.1}
Format	Liquid. Purified antibody supplied in 1x PBS buffer with 0.09% (w/v) sodium azide and 2% sucrose.
Reconstitution & Storage	Add 50 ul of distilled water. Final anti-STRA8 antibody concentration is 1 mg/ml in PBS buffer with 2% sucrose. For longer periods of storage, store at 20°C. Avoid repeat freeze-thaw cycles.
Precautions	STRA8 antibody - C-terminal region is for research use only and not for use in diagnostic or therapeutic procedures.

Protein Information

Name	STRA8 (HGNC:30653)
Function	Meiosis-inducer required for the transition into meiosis for both female and male germ cells. In female germ cells, acts downstream of ZGLP1 as a key effector of the meiotic program: required for premeiotic DNA replication and subsequent events in meiotic prophase. During spermatogenesis, next to its role in meiotic initiation, promotes (but is not required for) spermatogonial differentiation. In complex with MEIOSIN, directly activates the transcription of a subset of critical meiotic genes playing a central role in cell-cycle switching from mitosis to meiosis.
Cellular Location	Cytoplasm {ECO:0000250 UniProtKB:P70278}. Nucleus {ECO:0000250 UniProtKB:P70278}. Note=Shuttles between nucleus and

cytoplasm. Nuclear export is XPO1-dependent
{ECO:0000250|UniProtKB:P70278}

Tissue Location

Expressed specifically in testis and fetal ovaries.

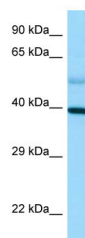
References

Miyamoto T.,et al.J. Assist. Reprod. Genet. 19:531-535(2002).

Scherer S.W.,et al.Science 300:767-772(2003).

Mural R.J.,et al.Submitted (JUL-2005) to the EMBL/GenBank/DDBJ databases.

Images



Host: Rabbit

Target Name: STRA8

Antibody Dilution: 1.0µg/ml

Sample Tissue: Human Lung

Please note: All products are 'FOR RESEARCH USE ONLY. NOT FOR USE IN DIAGNOSTIC OR THERAPEUTIC PROCEDURES'.