

# MTNR1B antibody - N-terminal region

Rabbit Polyclonal Antibody

Catalog # AI15056

## Product Information

---

<b>Application</b>	WB
<b>Primary Accession</b>	<a href="#">P49286</a>
<b>Other Accession</b>	<a href="#">NM_005959</a> , <a href="#">NP_005950</a>
<b>Reactivity</b>	Human, Rabbit, Pig
<b>Predicted</b>	Human
<b>Host</b>	Rabbit
<b>Clonality</b>	Polyclonal
<b>Calculated MW</b>	40188

## Additional Information

---

<b>Gene ID</b>	4544
<b>Alias Symbol</b>	FGQTL2, MEL-1B-R, MT2
<b>Other Names</b>	Melatonin receptor type 1B, Mel-1B-R, Mel1b receptor, MTNR1B
<b>Format</b>	Liquid. Purified antibody supplied in 1x PBS buffer with 0.09% (w/v) sodium azide and 2% sucrose.
<b>Reconstitution &amp; Storage</b>	Add 50 ul of distilled water. Final anti-MTNR1B antibody concentration is 1 mg/ml in PBS buffer with 2% sucrose. For longer periods of storage, store at 20°C. Avoid repeat freeze-thaw cycles.
<b>Precautions</b>	MTNR1B antibody - N-terminal region is for research use only and not for use in diagnostic or therapeutic procedures.

## Protein Information

---

<b>Name</b>	MTNR1B
<b>Function</b>	High affinity receptor for melatonin. Likely to mediate the reproductive and circadian actions of melatonin. The activity of this receptor is mediated by pertussis toxin sensitive G proteins that inhibit adenylate cyclase activity.
<b>Cellular Location</b>	Cell membrane; Multi-pass membrane protein.
<b>Tissue Location</b>	Expressed in retina and less in brain and hippocampus.

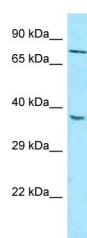
## References

---

Reppert S.M.,et al.Proc. Natl. Acad. Sci. U.S.A. 92:8734-8738(1995).  
Ebisawa T.,et al.Neurosci. Lett. 280:29-32(2000).  
King M.M.,et al.Submitted (JAN-2004) to the EMBL/GenBank/DDBJ databases.

## Images

---



WB Suggested Anti-MTNR1B Antibody Titration: 1.0 µg/ml  
Positive Control: HepG2 Whole Cell

Please note: All products are 'FOR RESEARCH USE ONLY. NOT FOR USE IN DIAGNOSTIC OR THERAPEUTIC PROCEDURES'.