

# P2RY11 antibody - C-terminal region

Rabbit Polyclonal Antibody

Catalog # AI15057

## Product Information

---

<b>Application</b>	WB
<b>Primary Accession</b>	<a href="#">Q96G91</a>
<b>Other Accession</b>	<a href="#">NM_002566</a> , <a href="#">NP_002557</a>
<b>Reactivity</b>	Human
<b>Predicted</b>	Human
<b>Host</b>	Rabbit
<b>Clonality</b>	Polyclonal
<b>Calculated MW</b>	40345

## Additional Information

---

<b>Gene ID</b>	5032
<b>Alias Symbol</b>	P2Y11
<b>Other Names</b>	P2Y purinoceptor 11, P2Y11, P2RY11
<b>Format</b>	Liquid. Purified antibody supplied in 1x PBS buffer with 0.09% (w/v) sodium azide and 2% sucrose.
<b>Reconstitution &amp; Storage</b>	Add 50 ul of distilled water. Final anti-P2RY11 antibody concentration is 1 mg/ml in PBS buffer with 2% sucrose. For longer periods of storage, store at 20°C. Avoid repeat freeze-thaw cycles.
<b>Precautions</b>	P2RY11 antibody - C-terminal region is for research use only and not for use in diagnostic or therapeutic procedures.

## Protein Information

---

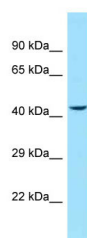
<b>Name</b>	P2RY11
<b>Function</b>	Receptor for ATP and ADP coupled to G-proteins that activate both phosphatidylinositol-calcium and adenylyl cyclase second messenger systems. Not activated by UTP or UDP.
<b>Cellular Location</b>	Cell membrane; Multi-pass membrane protein.
<b>Tissue Location</b>	Highest expression in liver and spleen.

## References

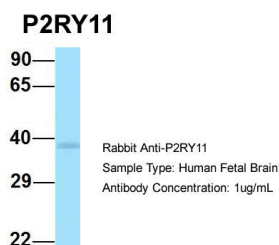
---

Communi D.,et al.J. Biol. Chem. 276:16561-16566(2001).  
King M.M.,et al.Submitted (OCT-2003) to the EMBL/GenBank/DDBJ databases.  
Ota T.,et al.Nat. Genet. 36:40-45(2004).  
Mural R.J.,et al.Submitted (JUL-2005) to the EMBL/GenBank/DDBJ databases.  
Communi D.,et al.J. Biol. Chem. 272:31969-31973(1997).

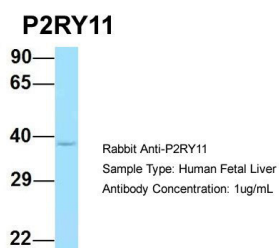
## Images



WB Suggested Anti-P2RY11 Antibody Titration: 1.0 µg/ml  
Positive Control: Hela Whole Cell



Host:Rabbit  
Target Name:P2RY11  
Sample Tissue:Human Fetal Brain  
Antibody Dilution: 1.0µg/ml



Host:Rabbit  
Target Name:P2RY11  
Sample Tissue:Human Fetal Liver  
Antibody Dilution: 1.0µg/ml

Please note: All products are 'FOR RESEARCH USE ONLY. NOT FOR USE IN DIAGNOSTIC OR THERAPEUTIC PROCEDURES'.