

ST6GAL1 antibody - C-terminal region

Rabbit Polyclonal Antibody

Catalog # AI15059

Product Information

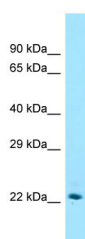
Application	WB
Primary Accession	B2R513
Other Accession	NM_173217 , NP_775324
Reactivity	Human, Mouse, Rat, Rabbit, Zebrafish, Pig, Goat, Dog, Guinea Pig, Horse, Bovine, Sheep
Predicted	Human, Mouse, Rat, Rabbit, Zebrafish, Pig, Goat, Dog, Guinea Pig, Horse, Bovine, Sheep
Host	Rabbit
Clonality	Polyclonal
Calculated MW	21 kDa

Additional Information

Alias Symbol	MGC48859, SIAT1, ST6GalI, ST6N
Format	Liquid. Purified antibody supplied in 1x PBS buffer with 0.09% (w/v) sodium azide and 2% sucrose.
Reconstitution & Storage	Add 50 ul of distilled water. Final anti-ST6GAL1 antibody concentration is 1 mg/ml in PBS buffer with 2% sucrose. For longer periods of storage, store at 20°C. Avoid repeat freeze-thaw cycles.
Precautions	ST6GAL1 antibody - C-terminal region is for research use only and not for use in diagnostic or therapeutic procedures.

Protein Information

Images



Host: Rabbit
Target Name: ST6GAL1
Antibody Dilution: 1.0µg/ml
Sample Tissue: Human Kidney

Please note: All products are 'FOR RESEARCH USE ONLY. NOT FOR USE IN DIAGNOSTIC OR THERAPEUTIC PROCEDURES'.