

RAB1B antibody - C-terminal region

Rabbit Polyclonal Antibody

Catalog # AI15060

Product Information

Application	WB
Primary Accession	Q9H0U4
Other Accession	NM_030981 , NP_112243
Reactivity	Human, Mouse, Rat, Dog, Guinea Pig, Horse, Bovine
Predicted	Human, Mouse, Rat, Pig, Bovine
Host	Rabbit
Clonality	Polyclonal
Calculated MW	22171

Additional Information

Gene ID	81876
Other Names	Ras-related protein Rab-1B, RAB1B
Format	Liquid. Purified antibody supplied in 1x PBS buffer with 0.09% (w/v) sodium azide and 2% sucrose.
Reconstitution & Storage	Add 50 ul of distilled water. Final anti-RAB1B antibody concentration is 1 mg/ml in PBS buffer with 2% sucrose. For longer periods of storage, store at 20°C. Avoid repeat freeze-thaw cycles.
Precautions	RAB1B antibody - C-terminal region is for research use only and not for use in diagnostic or therapeutic procedures.

Protein Information

Name	RAB1B (HGNC:18370)
Function	The small GTPases Rab are key regulators of intracellular membrane trafficking, from the formation of transport vesicles to their fusion with membranes (PubMed: 20545908 , PubMed: 9437002 , PubMed: 23236136). Rabs cycle between an inactive GDP-bound form and an active GTP-bound form that is able to recruit to membranes different set of downstream effectors directly responsible for vesicle formation, movement, tethering and fusion (PubMed: 9437002). Plays a role in the initial events of the autophagic vacuole development which take place at specialized regions of the endoplasmic reticulum (PubMed: 20545908). Regulates vesicular transport between the endoplasmic reticulum and successive Golgi compartments (By similarity). Required to modulate the compacted morphology of the Golgi (PubMed: 26209634). Promotes the recruitment of lipid phosphatase MTMR6

to the endoplasmic reticulum- Golgi intermediate compartment (By similarity).

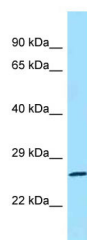
Cellular Location

Cytoplasm. Membrane; Lipid-anchor; Cytoplasmic side. Preautophagosomal structure membrane; Lipid-anchor; Cytoplasmic side. Cytoplasm, perinuclear region {ECO:0000250|UniProtKB:P10536}. Note=Targeted by REP1 to membranes of specific subcellular compartments including endoplasmic reticulum, Golgi apparatus, and intermediate vesicles between these two compartments (PubMed:11389151). In the GDP-form, colocalizes with GDI in the cytoplasm (PubMed:11389151). Co-localizes with MTMR6 to the endoplasmic reticulum-Golgi intermediate compartment and to the peri-Golgi region (By similarity). {ECO:0000250|UniProtKB:P10536, ECO:0000269|PubMed:11389151}

References

Zhao Y.,et al.Submitted (SEP-1998) to the EMBL/GenBank/DDBJ databases.
Wiemann S.,et al.Genome Res. 11:422-435(2001).
Ota T.,et al.Nat. Genet. 36:40-45(2004).
Bienvenut W.V.,et al.Submitted (JUN-2005) to UniProtKB.
Wilson A.L.,et al.Biochem. J. 318:1007-1014(1996).

Images



RAB1B antibody - C-terminal region (AI15060) validated by WB using Fetal Kidney Lysate at 1 µg/ml.

Please note: All products are 'FOR RESEARCH USE ONLY. NOT FOR USE IN DIAGNOSTIC OR THERAPEUTIC PROCEDURES'.