

# CCKAR antibody - C-terminal region

Rabbit Polyclonal Antibody

Catalog # AI15062

## Product Information

---

<b>Application</b>	WB
<b>Primary Accession</b>	<a href="#">P32238</a>
<b>Other Accession</b>	<a href="#">NM_000730</a> , <a href="#">NP_000721</a>
<b>Reactivity</b>	Human, Rat, Rabbit, Guinea Pig, Horse, Bovine
<b>Predicted</b>	Human, Rat, Rabbit, Horse, Bovine
<b>Host</b>	Rabbit
<b>Clonality</b>	Polyclonal
<b>Calculated MW</b>	47841

## Additional Information

---

<b>Gene ID</b>	886
<b>Alias Symbol</b> <b>Other Names</b>	CCK-A, CCK1-R, CCKRA Cholecystokinin receptor type A, CCK-A receptor, CCK-AR, Cholecystokinin-1 receptor, CCK1-R, CCKAR, CCKRA
<b>Format</b>	Liquid. Purified antibody supplied in 1x PBS buffer with 0.09% (w/v) sodium azide and 2% sucrose.
<b>Reconstitution &amp; Storage</b>	Add 50 ul of distilled water. Final anti-CCKAR antibody concentration is 1 mg/ml in PBS buffer with 2% sucrose. For longer periods of storage, store at 20°C. Avoid repeat freeze-thaw cycles.
<b>Precautions</b>	CCKAR antibody - C-terminal region is for research use only and not for use in diagnostic or therapeutic procedures.

## Protein Information

---

<b>Name</b>	CCKAR
<b>Synonyms</b>	CCKRA
<b>Function</b>	Receptor for cholecystokinin. Mediates pancreatic growth and enzyme secretion, smooth muscle contraction of the gall bladder and stomach. Has a 1000-fold higher affinity for CCK rather than for gastrin. It modulates feeding and dopamine-induced behavior in the central and peripheral nervous system. This receptor mediates its action by association with G proteins that activate a phosphatidylinositol-calcium second messenger system.
<b>Cellular Location</b>	Cell membrane; Multi-pass membrane protein.

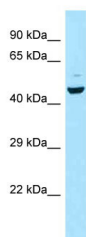
## References

---

Ulrich C.D.,et al.Biochem. Biophys. Res. Commun. 193:204-211(1993).  
Wank S.A.,et al.Biochem. Biophys. Res. Commun. 194:811-818(1993).  
Miller L.J.,et al.Gastroenterology 109:1375-1380(1995).  
Funakoshi A.,et al.FEBS Lett. 466:264-266(2000).  
Kopatz S.A.,et al.Submitted (JUN-2003) to the EMBL/GenBank/DDBJ databases.

## Images

---



WB Suggested Anti-CCKAR Antibody Titration: 1.0 µg/ml  
Positive Control: MCF7 Whole Cell

Please note: All products are 'FOR RESEARCH USE ONLY. NOT FOR USE IN DIAGNOSTIC OR THERAPEUTIC PROCEDURES'.