

BCMO1 antibody - C-terminal region

Rabbit Polyclonal Antibody

Catalog # AI15065

Product Information

Application	WB
Primary Accession	Q9HAY6
Other Accession	NM_017429 , NP_059125
Reactivity	Human
Predicted	Human
Host	Rabbit
Clonality	Polyclonal
Calculated MW	62637

Additional Information

Gene ID	53630
Alias Symbol	BCDO, BCDO1, BCMO, BCO, BCO1, FLJ10730
Other Names	Beta, beta-carotene 15, 15'-monooxygenase, 1.14.99.36, Beta-carotene dioxygenase 1, Beta-carotene oxygenase 1 {ECO:0000312 HGNC:HGNC:13815}, BCO1 (HGNC:13815)
Format	Liquid. Purified antibody supplied in 1x PBS buffer with 0.09% (w/v) sodium azide and 2% sucrose.
Reconstitution & Storage	Add 50 ul of distilled water. Final anti-BCMO1 antibody concentration is 1 mg/ml in PBS buffer with 2% sucrose. For longer periods of storage, store at 20°C. Avoid repeat freeze-thaw cycles.
Precautions	BCMO1 antibody - C-terminal region is for research use only and not for use in diagnostic or therapeutic procedures.

Protein Information

Name	BCO1 (HGNC:13815)
Function	Symmetrically cleaves beta-carotene into two molecules of retinal using a dioxygenase mechanism.
Cellular Location	Cytoplasm, cytosol {ECO:0000250 UniProtKB:Q9I993}
Tissue Location	Highly expressed in retinal pigment epithelium. Also expressed in kidney, testis, liver, brain, small intestine and colon.

References

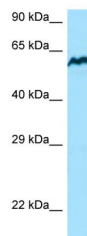
Yan W.,et al.Genomics 72:193-202(2001).

Ota T.,et al.Nat. Genet. 36:40-45(2004).

Mural R.J.,et al.Submitted (SEP-2005) to the EMBL/GenBank/DDBJ databases.

Lindqvist A.,et al.J. Nutr. 137:2346-2350(2007).

Images



Host: Rabbit

Target Name: BCMO1

Sample Tissue:A549 cell lysate

S

Antibody Dilution: 1.0µg/ml BCMO1 is supported by BioGPS gene expression data to be expressed in A549

Please note: All products are 'FOR RESEARCH USE ONLY. NOT FOR USE IN DIAGNOSTIC OR THERAPEUTIC PROCEDURES'.