

STC2 antibody - C-terminal region

Rabbit Polyclonal Antibody

Catalog # AI15070

Product Information

Application	WB
Primary Accession	O76061
Other Accession	NM_003714 , NP_003705
Reactivity	Human, Mouse, Rat, Rabbit, Pig, Dog, Guinea Pig, Bovine
Predicted	Human, Mouse, Rat, Rabbit, Pig, Dog, Bovine
Host	Rabbit
Clonality	Polyclonal
Calculated MW	33249

Additional Information

Gene ID	8614
Alias Symbol Other Names	STC-2, STCRP Stanniocalcin-2, STC-2, Stanniocalcin-related protein, STC-related protein, STCRP, STC2
Format	Liquid. Purified antibody supplied in 1x PBS buffer with 0.09% (w/v) sodium azide and 2% sucrose.
Reconstitution & Storage	Add 50 ul of distilled water. Final anti-STC2 antibody concentration is 1 mg/ml in PBS buffer with 2% sucrose. For longer periods of storage, store at 20°C. Avoid repeat freeze-thaw cycles.
Precautions	STC2 antibody - C-terminal region is for research use only and not for use in diagnostic or therapeutic procedures.

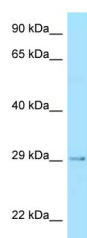
Protein Information

Name	STC2
Function	Has an anti-hypocalcemic action on calcium and phosphate homeostasis.
Cellular Location	Secreted.
Tissue Location	Expressed in a variety of tissues including muscle, heart, pancreas, kidney, spleen, prostate, small intestine, colon and peripheral blood leukocytes

References

Chang A.C.-M.,et al.Mol. Cell. Endocrinol. 141:95-99(1998).
Ishiabshi K.,et al.Biochem. Biophys. Res. Commun. 250:252-258(1998).
DiMattia G.E.,et al.Mol. Cell. Endocrinol. 146:137-140(1998).
Moore E.E.,et al.Horm. Metab. Res. 31:406-414(1999).
Kalnine N.,et al.Submitted (OCT-2004) to the EMBL/GenBank/DDBJ databases.

Images



WB Suggested Anti-STC2 Antibody Titration: 1.0 µg/ml
Positive Control: Fetal Heart

Please note: All products are 'FOR RESEARCH USE ONLY. NOT FOR USE IN DIAGNOSTIC OR THERAPEUTIC PROCEDURES'.