

MPP1 antibody - N-terminal region

Rabbit Polyclonal Antibody

Catalog # AI15086

Product Information

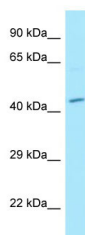
Application	WB
Primary Accession	B4DZV5
Other Accession	NM_001166462 , NP_001159934
Reactivity	Human, Mouse, Rat, Rabbit, Pig, Dog, Guinea Pig, Horse
Predicted	Human, Mouse, Rat, Rabbit, Pig, Dog, Guinea Pig, Horse
Host	Rabbit
Clonality	Polyclonal
Calculated MW	47 kDa

Additional Information

Alias Symbol	AAG12, DXS552E, EMP55, MRG1, PEMP
Format	Liquid. Purified antibody supplied in 1x PBS buffer with 0.09% (w/v) sodium azide and 2% sucrose.
Reconstitution & Storage	Add 50 ul of distilled water. Final anti-MPP1 antibody concentration is 1 mg/ml in PBS buffer with 2% sucrose. For longer periods of storage, store at 20°C. Avoid repeat freeze-thaw cycles.
Precautions	MPP1 antibody - N-terminal region is for research use only and not for use in diagnostic or therapeutic procedures.

Protein Information

Images



WB Suggested Anti-MPP1 Antibody Titration: 1.0 µg/ml
Positive Control: NCI-H226 Whole Cell