

CDC14A antibody - C-terminal region

Rabbit Polyclonal Antibody

Catalog # AI15092

Product Information

Application	WB
Primary Accession	Q9UNH5
Other Accession	NM_003672 , NP_003663
Reactivity	Human, Mouse, Rat, Rabbit, Dog, Guinea Pig, Horse, Bovine
Predicted	Human, Mouse, Rat, Rabbit, Pig, Dog, Guinea Pig, Horse, Bovine
Host	Rabbit
Clonality	Polyclonal
Calculated MW	66574

Additional Information

Gene ID	8556
Alias Symbol	cdc14, hCDC14
Other Names	Dual specificity protein phosphatase CDC14A, 3.1.3.16, 3.1.3.48, CDC14 cell division cycle 14 homolog A, CDC14A
Format	Liquid. Purified antibody supplied in 1x PBS buffer with 0.09% (w/v) sodium azide and 2% sucrose.
Reconstitution & Storage	Add 50 ul of distilled water. Final anti-CDC14A antibody concentration is 1 mg/ml in PBS buffer with 2% sucrose. For longer periods of storage, store at 20°C. Avoid repeat freeze-thaw cycles.
Precautions	CDC14A antibody - C-terminal region is for research use only and not for use in diagnostic or therapeutic procedures.

Protein Information

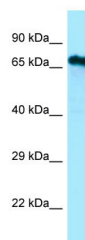
Name	CDC14A
Function	Dual-specificity phosphatase. Required for centrosome separation and productive cytokinesis during cell division. Dephosphorylates SIRT2 around early anaphase. May dephosphorylate the APC subunit FZR1/CDH1, thereby promoting APC-FZR1 dependent degradation of mitotic cyclins and subsequent exit from mitosis. Required for normal hearing (PubMed: 29293958).
Cellular Location	Nucleus. Cytoplasm, cytoskeleton, microtubule organizing center, centrosome. Cytoplasm, cytoskeleton, spindle pole. Cytoplasm, cytoskeleton, spindle. Cell projection, kinocilium {ECO:0000250 UniProtKB:Q6GQT0}. Cell

projection, stereocilium {ECO:0000250|UniProtKB:Q6GQT0}.
Note=Centrosomal during interphase, released into the cytoplasm at the onset of mitosis. Subsequently localizes to the mitotic spindle pole and at the central spindle (PubMed:11901424, PubMed:12134069, PubMed:15263015).
Present along both the transient kinocilia of developing cochlear hair cells and the persistent kinocilia of vestibular hair cells (By similarity)
{ECO:0000250|UniProtKB:Q6GQT0, ECO:0000269|PubMed:11901424, ECO:0000269|PubMed:12134069, ECO:0000269|PubMed:15263015}

References

Li L.,et al.J. Biol. Chem. 272:29403-29406(1997).
Wong A.K.C.,et al.Genomics 59:248-251(1999).
Hao L.,et al.Submitted (MAY-1998) to the EMBL/GenBank/DDBJ databases.
Belyaev A.S.,et al.Submitted (MAY-2006) to the EMBL/GenBank/DDBJ databases.
Gregory S.G.,et al.Nature 441:315-321(2006).

Images



WB Suggested Anti-CDC14A Antibody Titration: 1.0 µg/ml
Positive Control: RPMI-8226 Whole Cell
CDC14A is strongly supported by BioGPS gene expression data to be expressed in Human RPMI-8226 cells

Please note: All products are 'FOR RESEARCH USE ONLY. NOT FOR USE IN DIAGNOSTIC OR THERAPEUTIC PROCEDURES'.