

IFI30 Antibody - middle region

Rabbit Polyclonal Antibody

Catalog # AI15095

Product Information

Application	WB
Primary Accession	P13284
Other Accession	NM_006332 , NP_006323
Reactivity	Human, Mouse, Rat, Pig, Dog, Horse, Bovine, Sheep
Predicted	Human, Mouse, Rat, Pig, Dog, Horse, Bovine, Sheep
Host	Rabbit
Clonality	Polyclonal
Calculated MW	27964

Additional Information

Gene ID	10437
Alias Symbol	GILT, IFI-30, IP30, MGC32056
Other Names	Gamma-interferon-inducible lysosomal thiol reductase, 1.8.-., Gamma-interferon-inducible protein IP-30, Legumaturain, IFI30, GILT, IP30
Format	Liquid. Purified antibody supplied in 1x PBS buffer with 0.09% (w/v) sodium azide and 2% sucrose.
Reconstitution & Storage	Add 50 ul of distilled water. Final anti-IFI30 antibody concentration is 1 mg/ml in PBS buffer with 2% sucrose. For longer periods of storage, store at 20°C. Avoid repeat freeze-thaw cycles.
Precautions	IFI30 Antibody - middle region is for research use only and not for use in diagnostic or therapeutic procedures.

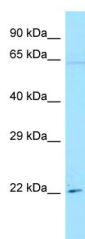
Protein Information

Name	IFI30
Synonyms	GILT, IP30
Function	Lysosomal thiol reductase that can reduce protein disulfide bonds. May facilitate the complete unfolding of proteins destined for lysosomal degradation. Plays an important role in antigen processing. Facilitates the generation of MHC class II-restricted epitodes from disulfide bond-containing antigen by the endocytic reduction of disulfide bonds (By similarity). Also facilitates MHC class I- restricted recognition of exogenous antigens containing disulfide bonds by CD8+ T-cells or crosspresentation (By similarity).

References

Luster A.D.,et al.J. Biol. Chem. 263:12036-12043(1988).
Arunachalam B.,et al.Proc. Natl. Acad. Sci. U.S.A. 97:745-750(2000).
Arahira M.,et al.Submitted (OCT-2000) to the EMBL/GenBank/DDBJ databases.
Ota T.,et al.Nat. Genet. 36:40-45(2004).
Grimwood J.,et al.Nature 428:529-535(2004).

Images



WB Suggested Anti-IFI30 Antibody Titration: 1.0 µg/ml
Positive Control: HeLa Whole CellIFI30 is supported by
BioGPS gene expression data to be expressed in HeLa

Please note: All products are 'FOR RESEARCH USE ONLY. NOT FOR USE IN DIAGNOSTIC OR THERAPEUTIC PROCEDURES'.