

# RAP2B antibody - C-terminal region

Rabbit Polyclonal Antibody

Catalog # AI15096

## Product Information

---

<b>Application</b>	WB
<b>Primary Accession</b>	<a href="#">P61225</a>
<b>Other Accession</b>	<a href="#">NM_002886</a> , <a href="#">NP_002877</a>
<b>Reactivity</b>	Human, Mouse, Rat, Rabbit, Zebrafish, Dog, Guinea Pig, Bovine, Yeast
<b>Predicted</b>	Human, Mouse, Rat, Rabbit, Zebrafish, Pig, Dog, Guinea Pig, Bovine, Yeast
<b>Host</b>	Rabbit
<b>Clonality</b>	Polyclonal
<b>Calculated MW</b>	20504

## Additional Information

---

<b>Gene ID</b>	5912
<b>Alias Symbol</b>	MGC20484
<b>Other Names</b>	Ras-related protein Rap-2b, RAP2B
<b>Format</b>	Liquid. Purified antibody supplied in 1x PBS buffer with 0.09% (w/v) sodium azide and 2% sucrose.
<b>Reconstitution &amp; Storage</b>	Add 50 ul of distilled water. Final anti-RAP2B antibody concentration is 1 mg/ml in PBS buffer with 2% sucrose. For longer periods of storage, store at 20°C. Avoid repeat freeze-thaw cycles.
<b>Precautions</b>	RAP2B antibody - C-terminal region is for research use only and not for use in diagnostic or therapeutic procedures.

## Protein Information

---

<b>Name</b>	RAP2B
<b>Function</b>	Small GTP-binding protein which cycles between a GDP-bound inactive and a GTP-bound active form. Involved in EGFR and CHRM3 signaling pathways through stimulation of PLCE1. May play a role in cytoskeletal rearrangements and regulate cell spreading through activation of the effector TNIK. May regulate membrane vesiculation in red blood cells.
<b>Cellular Location</b>	Recycling endosome membrane; Lipid-anchor; Cytoplasmic side. Note=Associated with red blood cells- released vesicles
<b>Tissue Location</b>	Expressed in red blood cells (at protein level).

## References

---

Farrell F.X.,et al.Nucleic Acids Res. 18:4281-4281(1990).

Ohmstede C.A.,et al.Proc. Natl. Acad. Sci. U.S.A. 87:6527-6531(1990).

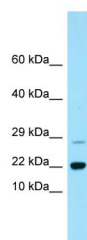
Puhl H.L. III,et al.Submitted (MAR-2002) to the EMBL/GenBank/DDBJ databases.

Farrell F.X.,et al.Biochem. J. 289:349-355(1993).

Evellin S.,et al.J. Biol. Chem. 277:16805-16813(2002).

## Images

---



WB Suggested Anti-RAP2B Antibody Titration: 1.0 µg/ml  
Positive Control: Fetal Liver

Please note: All products are 'FOR RESEARCH USE ONLY. NOT FOR USE IN DIAGNOSTIC OR THERAPEUTIC PROCEDURES'.