

GPIHBP1 Antibody - C-terminal region

Rabbit Polyclonal Antibody

Catalog # AI15106

Product Information

Application	WB
Primary Accession	Q8IV16
Other Accession	NM_178172 , NP_835466
Reactivity	Human
Predicted	Human
Host	Rabbit
Clonality	Polyclonal
Calculated MW	19850

Additional Information

Gene ID	338328
Alias Symbol	GPI-HBP1
Other Names	Glycosylphosphatidylinositol-anchored high density lipoprotein-binding protein 1, GPI-HBP1, GPI-anchored HDL-binding protein 1, High density lipoprotein-binding protein 1, GPIHBP1, HBP1
Format	Liquid. Purified antibody supplied in 1x PBS buffer with 0.09% (w/v) sodium azide and 2% sucrose.
Reconstitution & Storage	Add 50 ul of distilled water. Final anti-GPIHBP1 antibody concentration is 1 mg/ml in PBS buffer with 2% sucrose. For longer periods of storage, store at 20°C. Avoid repeat freeze-thaw cycles.
Precautions	GPIHBP1 Antibody - C-terminal region is for research use only and not for use in diagnostic or therapeutic procedures.

Protein Information

Name	GPIHBP1 (HGNC:24945)
Synonyms	HBP1
Function	Mediates the transport of lipoprotein lipase LPL from the basolateral to the apical surface of endothelial cells in capillaries (By similarity). Anchors LPL on the surface of endothelial cells in the lumen of blood capillaries (By similarity). Protects LPL against loss of activity, and against ANGPTL4-mediated unfolding (PubMed: 27929370 , PubMed: 29899144). Thereby, plays an important role in lipolytic processing of chylomicrons by LPL, triglyceride metabolism and lipid homeostasis (PubMed: 19304573 ,

PubMed:[21314738](#)). Binds chylomicrons and phospholipid particles that contain APOA5 (PubMed:[17997385](#), PubMed:[19304573](#)). Binds high-density lipoprotein (HDL) and plays a role in the uptake of lipids from HDL (By similarity).

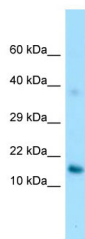
Cellular Location

Apical cell membrane {ECO:0000250|UniProtKB:Q9D1N2}; Lipid-anchor, GPI-anchor {ECO:0000250|UniProtKB:Q9D1N2}. Basolateral cell membrane {ECO:0000250|UniProtKB:Q9D1N2}; Lipid-anchor, GPI-anchor {ECO:0000250|UniProtKB:Q9D1N2}. Cell membrane; Lipid-anchor, GPI-anchor {ECO:0000250|UniProtKB:Q9D1N2}

References

Shan Y.X.,et al.Submitted (FEB-2003) to the EMBL/GenBank/DDBJ databases.
Mural R.J.,et al.Submitted (SEP-2005) to the EMBL/GenBank/DDBJ databases.
Gin P.,et al.Biochim. Biophys. Acta 1771:1464-1468(2007).
Young S.G.,et al.J. Lipid Res. 52:1869-1884(2011).
Wang J.,et al.Lipids Health Dis. 6:23-23(2007).

Images



WB Suggested Anti-GPIHBP1 Antibody Titration: 1.0 µg/ml
Positive Control: HepG2 Whole Cell

Please note: All products are 'FOR RESEARCH USE ONLY. NOT FOR USE IN DIAGNOSTIC OR THERAPEUTIC PROCEDURES'.