

NAPSA antibody - middle region

Rabbit Polyclonal Antibody

Catalog # AI15117

Product Information

Application	WB
Primary Accession	O96009
Other Accession	NM_004851 , NP_004842
Reactivity	Human, Mouse, Rat, Pig, Dog, Horse, Bovine
Predicted	Human, Mouse, Rat, Pig, Dog, Horse, Bovine
Host	Rabbit
Clonality	Polyclonal
Calculated MW	45387

Additional Information

Gene ID	9476
Alias Symbol	KAP, Kdap, NAP1, NAPA, SNAPA
Other Names	Napsin-A, 3.4.23.-, Aspartyl protease 4, ASP4, Asp 4, Napsin-1, TA01/TA02, NAPSA, NAP1, NAPA
Format	Liquid. Purified antibody supplied in 1x PBS buffer with 0.09% (w/v) sodium azide and 2% sucrose.
Reconstitution & Storage	Add 50 ul of distilled water. Final anti-NAPSA antibody concentration is 1 mg/ml in PBS buffer with 2% sucrose. For longer periods of storage, store at 20°C. Avoid repeat freeze-thaw cycles.
Precautions	NAPSA antibody - middle region is for research use only and not for use in diagnostic or therapeutic procedures.

Protein Information

Name	NAPSA
Synonyms	NAP1, NAPA
Function	May be involved in processing of pneumocyte surfactant precursors.
Cellular Location	Secreted.
Tissue Location	Expressed predominantly in adult lung (type II pneumocytes) and kidney and in fetal lung. Low levels in adult spleen and very low levels in peripheral blood leukocytes

References

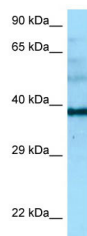
Tatnell P.J.,et al.FEBS Lett. 441:43-48(1998).

Chuman Y.,et al.FEBS Lett. 462:129-134(1999).

Yan R.,et al.Nature 402:533-537(1999).

Koelsch G.,et al.Submitted (OCT-1998) to the EMBL/GenBank/DDBJ databases.

Images



WB Suggested Anti-NAPSA Antibody Titration: 1.0 µg/ml
Positive Control: Placenta

Please note: All products are 'FOR RESEARCH USE ONLY. NOT FOR USE IN DIAGNOSTIC OR THERAPEUTIC PROCEDURES'.