

# HTRA3 antibody - middle region

Rabbit Polyclonal Antibody

Catalog # AI15121

## Product Information

---

<b>Application</b>	WB
<b>Primary Accession</b>	<a href="#">P83110</a>
<b>Other Accession</b>	<a href="#">NM_053044</a> , <a href="#">NP_444272</a>
<b>Reactivity</b>	Human, Mouse, Rat, Dog, Guinea Pig, Horse
<b>Predicted</b>	Human, Mouse, Rat, Pig, Dog, Guinea Pig, Horse
<b>Host</b>	Rabbit
<b>Clonality</b>	Polyclonal
<b>Calculated MW</b>	48608

## Additional Information

---

<b>Gene ID</b>	94031
<b>Alias Symbol</b>	Prsp, Tasp
<b>Other Names</b>	Serine protease HTRA3, 3.4.21.-, High-temperature requirement factor A3, Pregnancy-related serine protease, HTRA3, PRSP
<b>Format</b>	Liquid. Purified antibody supplied in 1x PBS buffer with 0.09% (w/v) sodium azide and 2% sucrose.
<b>Reconstitution &amp; Storage</b>	Add 50 ul of distilled water. Final anti-HTRA3 antibody concentration is 1 mg/ml in PBS buffer with 2% sucrose. For longer periods of storage, store at 20°C. Avoid repeat freeze-thaw cycles.
<b>Precautions</b>	HTRA3 antibody - middle region is for research use only and not for use in diagnostic or therapeutic procedures.

## Protein Information

---

<b>Name</b>	HTRA3
<b>Synonyms</b>	PRSP
<b>Function</b>	Serine protease that cleaves beta-casein/CSN2 as well as several extracellular matrix (ECM) proteoglycans such as decorin/DCN, biglycan/BGN and fibronectin/FN1. Inhibits signaling mediated by TGF- beta family proteins possibly indirectly by degradation of these ECM proteoglycans (By similarity). May act as a tumor suppressor. Negatively regulates, in vitro, trophoblast invasion during placental development and may be involved in the development of the placenta in vivo. May also have a role in ovarian development, granulosa cell differentiation and luteinization

(PubMed:[21321049](#), PubMed:[22229724](#)).

**Cellular Location**

Secreted. Note=Secretion increased during decidualization of endometrial stromal cells

**Tissue Location**

Widely expressed, with highest levels in both adult and fetal heart, ovary, uterus placenta, and bladder. In the endometrium, expressed in epithelial glands and the stroma. Also present in leukocytes. Isoform 1 is predominant in heart and skeletal muscle, whereas isoform 2 is predominant in placenta and kidney

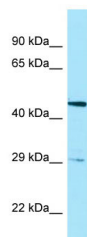
## References

---

Nie G.-Y.,et al.Biochem. J. 371:39-48(2003).  
Southan C.,et al.Submitted (JUN-2002) to the EMBL/GenBank/DDBJ databases.  
Hillier L.W.,et al.Nature 434:724-731(2005).  
Bowden M.A.,et al.Gynecol. Oncol. 103:253-260(2006).  
Narkiewicz J.,et al.Oncol. Rep. 21:1529-1537(2009).

## Images

---



WB Suggested Anti-HTRA3 Antibody Titration: 1.0 µg/ml  
Positive Control: Fetal Brain

Please note: All products are 'FOR RESEARCH USE ONLY. NOT FOR USE IN DIAGNOSTIC OR THERAPEUTIC PROCEDURES'.