

# RPL4 antibody - C-terminal region

Rabbit Polyclonal Antibody

Catalog # AI15123

## Product Information

---

<b>Application</b>	WB
<b>Primary Accession</b>	<a href="#">P36578</a>
<b>Other Accession</b>	<a href="#">NM_000968</a> , <a href="#">NP_000959</a>
<b>Reactivity</b>	Human, Mouse, Rat, Pig, Goat, Dog, Horse, Bovine
<b>Predicted</b>	Human, Mouse, Rat, Pig, Goat, Dog, Horse, Bovine
<b>Host</b>	Rabbit
<b>Clonality</b>	Polyclonal
<b>Calculated MW</b>	47697

## Additional Information

---

<b>Gene ID</b>	6124
<b>Alias Symbol</b>	L4
<b>Other Names</b>	60S ribosomal protein L4, 60S ribosomal protein L1, RPL4, RPL1
<b>Format</b>	Liquid. Purified antibody supplied in 1x PBS buffer with 0.09% (w/v) sodium azide and 2% sucrose.
<b>Reconstitution &amp; Storage</b>	Add 50 ul of distilled water. Final anti-RPL4 antibody concentration is 1 mg/ml in PBS buffer with 2% sucrose. For longer periods of storage, store at 20°C. Avoid repeat freeze-thaw cycles.
<b>Precautions</b>	RPL4 antibody - C-terminal region is for research use only and not for use in diagnostic or therapeutic procedures.

## Protein Information

---

<b>Name</b>	RPL4
<b>Synonyms</b>	RPL1
<b>Function</b>	Component of the large ribosomal subunit. The ribosome is a large ribonucleoprotein complex responsible for the synthesis of proteins in the cell.
<b>Cellular Location</b>	Cytoplasm.

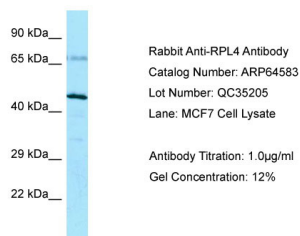
## References

---

Bagni C.,et al.Biochim. Biophys. Acta 1216:475-478(1993).  
Bagni C.,et al.Submitted (JAN-2004) to the EMBL/GenBank/DDBJ databases.  
Kato S.,et al.Submitted (NOV-1993) to the EMBL/GenBank/DDBJ databases.  
Yoshihama M.,et al.Genome Res. 12:379-390(2002).  
Ota T.,et al.Nat. Genet. 36:40-45(2004).

## Images

---



Host: Rabbit

Target Name: RPL4

Sample Tissue: MCF7 lysatesAntibody Dilution: 1.0µg/ml

Please note: All products are 'FOR RESEARCH USE ONLY. NOT FOR USE IN DIAGNOSTIC OR THERAPEUTIC PROCEDURES'.