

GPR12 Antibody - C-terminal region

Rabbit Polyclonal Antibody

Catalog # AI15142

Product Information

Application	WB
Primary Accession	P47775
Other Accession	NM_005288 , NP_005279
Reactivity	Human, Mouse, Rat, Rabbit, Pig, Dog, Horse, Bovine
Predicted	Human, Mouse, Rat, Rabbit, Pig, Dog, Horse, Bovine
Host	Rabbit
Clonality	Polyclonal
Calculated MW	36730

Additional Information

Gene ID	2835
Alias Symbol Other Names	FLJ18149, FLJ97704, GPCR12, GPCR21, MGC138349, MGC138351 G-protein coupled receptor 12, GPR12
Format	Liquid. Purified antibody supplied in 1x PBS buffer with 0.09% (w/v) sodium azide and 2% sucrose.
Reconstitution & Storage	Add 50 ul of distilled water. Final anti-GPR12 antibody concentration is 1 mg/ml in PBS buffer with 2% sucrose. For longer periods of storage, store at 20°C. Avoid repeat freeze-thaw cycles.
Precautions	GPR12 Antibody - C-terminal region is for research use only and not for use in diagnostic or therapeutic procedures.

Protein Information

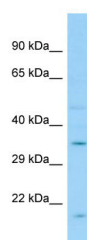
Name	GPR12
Function	Promotes neurite outgrowth and blocks myelin inhibition in neurons (By similarity). Receptor with constitutive G(s) signaling activity that stimulates cyclic AMP production.
Cellular Location	Cell membrane; Multi-pass membrane protein

References

Song Z.-H., et al. Genomics 28:347-349(1995).

Dunham A.,et al.Nature 428:522-528(2004).
Uhlenbrock K.,et al.Cell. Signal. 14:941-953(2002).
Yin H.,et al.J. Biol. Chem. 284:12328-12338(2009).

Images



WB Suggested Anti-GPR12 Antibody Titration: 1.0 µg/ml
Positive Control: Fetal Liver

Please note: All products are 'FOR RESEARCH USE ONLY. NOT FOR USE IN DIAGNOSTIC OR THERAPEUTIC PROCEDURES'.