

LPAR4 antibody - C-terminal region

Rabbit Polyclonal Antibody

Catalog # AI15143

Product Information

Application	WB
Primary Accession	Q99677
Other Accession	NM_005296 , NP_005287
Reactivity	Human, Mouse, Rat, Rabbit, Pig, Dog, Horse, Bovine
Predicted	Human, Mouse, Rat, Rabbit, Pig, Dog, Horse, Bovine
Host	Rabbit
Clonality	Polyclonal
Calculated MW	41895

Additional Information

Gene ID	2846
Alias Symbol	GPR23, LPA4, P2RY9, P2Y5-LIKE, P2Y9
Other Names	Lysophosphatidic acid receptor 4, LPA receptor 4, LPA-4, G-protein coupled receptor 23, P2Y purinoceptor 9, P2Y9, P2Y5-like receptor, Purinergic receptor 9, LPAR4, GPR23, LPA4, P2RY9
Format	Liquid. Purified antibody supplied in 1x PBS buffer with 0.09% (w/v) sodium azide and 2% sucrose.
Reconstitution & Storage	Add 50 ul of distilled water. Final anti-LPAR4 antibody concentration is 1 mg/ml in PBS buffer with 2% sucrose. For longer periods of storage, store at 20°C. Avoid repeat freeze-thaw cycles.
Precautions	LPAR4 antibody - C-terminal region is for research use only and not for use in diagnostic or therapeutic procedures.

Protein Information

Name	LPAR4
Synonyms	GPR23, LPA4, P2RY9
Function	Receptor for lysophosphatidic acid (LPA), a mediator of diverse cellular activities. Transduces a signal by increasing the intracellular calcium ions and by stimulating adenylyl cyclase activity. The rank order of potency for agonists of this receptor is 1- oleoyl- > 1-stearoyl- > 1-palmitoyl- > 1-myristoyl- > 1-alkyl- > 1- alkenyl-LPA.
Cellular Location	Cell membrane; Multi-pass membrane protein.

Tissue Location

High expression in ovary. Not detected in the brain regions thalamus, putamen, caudate, frontal cortex, pons, hypothalamus and hippocampus.

References

O'Dowd B.F.,et al.Gene 187:75-81(1997).

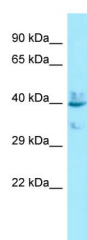
Bohm S.K.,et al.Submitted (JUL-1997) to the EMBL/GenBank/DDBJ databases.

Janssens R.,et al.Biochem. Biophys. Res. Commun. 236:106-112(1997).

Kopatz S.A.,et al.Submitted (MAY-2003) to the EMBL/GenBank/DDBJ databases.

Ota T.,et al.Nat. Genet. 36:40-45(2004).

Images



WB Suggested Anti-LPAR4 Antibody Titration: 1.0 µg/ml
Positive Control: 293T Whole Cell

Please note: All products are 'FOR RESEARCH USE ONLY. NOT FOR USE IN DIAGNOSTIC OR THERAPEUTIC PROCEDURES'.