

# BPY2 antibody - C-terminal region

Rabbit Polyclonal Antibody

Catalog # AI15152

## Product Information

---

<b>Application</b>	WB
<b>Primary Accession</b>	<a href="#">O14599</a>
<b>Other Accession</b>	<a href="#">NM_004678</a> , <a href="#">NP_004669</a>
<b>Reactivity</b>	Human
<b>Predicted</b>	Human
<b>Host</b>	Rabbit
<b>Clonality</b>	Polyclonal
<b>Calculated MW</b>	12063

## Additional Information

---

<b>Gene ID</b>	442867;442868;9083
<b>Alias Symbol</b>	BPY2A, BPY2B, BPY2C, VCY2, VCY2A
<b>Other Names</b>	Testis-specific basic protein Y 2, Basic charge, Y-linked 2, Variably charged protein Y 2, BPY2, BPY2A, VCY2, VCY2A
<b>Format</b>	Liquid. Purified antibody supplied in 1x PBS buffer with 0.09% (w/v) sodium azide and 2% sucrose.
<b>Reconstitution &amp; Storage</b>	Add 50 ul of distilled water. Final anti-BPY2 antibody concentration is 1 mg/ml in PBS buffer with 2% sucrose. For longer periods of storage, store at 20°C. Avoid repeat freeze-thaw cycles.
<b>Precautions</b>	BPY2 antibody - C-terminal region is for research use only and not for use in diagnostic or therapeutic procedures.

## Protein Information

---

<b>Name</b>	BPY2
<b>Synonyms</b>	BPY2A, VCY2, VCY2A
<b>Tissue Location</b>	Expressed exclusively in testis. Expressed in ejaculated spermatozoa of germ cell. Expressed in the nuclei of spermatogonia, spermatocytes, and round spermatids, except elongated spermatids (at protein level).

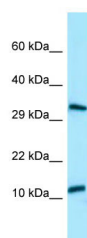
## References

---

Lahn B.T.,et al.Science 278:675-680(1997).  
Skaletsky H.,et al.Nature 423:825-837(2003).  
Wong E.Y.,et al.Biochem. Biophys. Res. Commun. 296:1104-1111(2002).  
Tse J.Y.,et al.Biol. Reprod. 69:746-751(2003).  
Wong E.Y.,et al.Biol. Reprod. 70:775-784(2004).

## Images

---



WB Suggested Anti-BPY2 Antibody Titration: 1.0 µg/ml  
Positive Control: HepG2 Whole Cell

Please note: All products are 'FOR RESEARCH USE ONLY. NOT FOR USE IN DIAGNOSTIC OR THERAPEUTIC PROCEDURES'.