

# EAF2 Antibody - C-terminal region

Rabbit Polyclonal Antibody

Catalog # AI15154

## Product Information

---

<b>Application</b>	WB
<b>Primary Accession</b>	<a href="#">Q96CJ1</a>
<b>Other Accession</b>	<a href="#">NM_018456</a> , <a href="#">NP_060926</a>
<b>Reactivity</b>	Human
<b>Predicted</b>	Human
<b>Host</b>	Rabbit
<b>Clonality</b>	Polyclonal
<b>Calculated MW</b>	28792

## Additional Information

---

<b>Gene ID</b>	55840
<b>Alias Symbol</b>	BM040, TRAITS, U19
<b>Other Names</b>	ELL-associated factor 2, Testosterone-regulated apoptosis inducer and tumor suppressor protein, EAF2, TRAITS
<b>Format</b>	Liquid. Purified antibody supplied in 1x PBS buffer with 0.09% (w/v) sodium azide and 2% sucrose.
<b>Reconstitution &amp; Storage</b>	Add 50 ul of distilled water. Final anti-EAF2 antibody concentration is 1 mg/ml in PBS buffer with 2% sucrose. For longer periods of storage, store at 20°C. Avoid repeat freeze-thaw cycles.
<b>Precautions</b>	EAF2 Antibody - C-terminal region is for research use only and not for use in diagnostic or therapeutic procedures.

## Protein Information

---

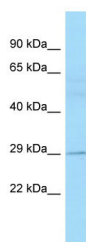
<b>Name</b>	EAF2
<b>Synonyms</b>	TRAITS
<b>Function</b>	Acts as a transcriptional transactivator of TCEA1 elongation activity (By similarity). Acts as a transcriptional transactivator of ELL and ELL2 elongation activities. Potent inducer of apoptosis in prostatic and non-prostatic cell lines. Inhibits prostate tumor growth in vivo.
<b>Cellular Location</b>	Nucleus speckle
<b>Tissue Location</b>	Expressed in heart, brain, placenta, lung, skeletal muscle, kidney, pancreas,

spleen, prostate, testis, small intestine, colon, adrenal, bone marrow, lymph node, spinal gland, stomach, thyroid, trachea, thymus, liver and leukocytes

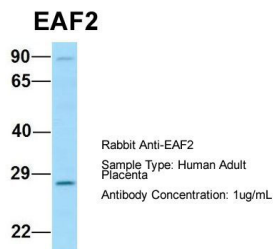
## References

Simone F.,et al.Blood 101:2355-2362(2003).  
Xiao W.,et al.Cancer Res. 63:4698-4704(2003).  
Zhang Q.-H.,et al.Genome Res. 10:1546-1560(2000).  
Kong S.E.,et al.Proc. Natl. Acad. Sci. U.S.A. 102:10094-10098(2005).  
Dephoure N.,et al.Proc. Natl. Acad. Sci. U.S.A. 105:10762-10767(2008).

## Images



WB Suggested Anti-EAF2 Antibody Titration: 1.0 µg/ml  
Positive Control: Fetal Lung



Host:Rabbit  
Target Name:EAF2  
Sample Tissue:Human Adult Placenta  
Antibody Dilution: 1.0µg/ml

Please note: All products are 'FOR RESEARCH USE ONLY. NOT FOR USE IN DIAGNOSTIC OR THERAPEUTIC PROCEDURES'.