

MMP28 antibody - C-terminal region

Rabbit Polyclonal Antibody

Catalog # AI15157

Product Information

Application	WB
Primary Accession	Q9H239
Other Accession	NM_024302 , NP_077278
Reactivity	Human, Dog, Horse, Bovine
Predicted	Human, Dog, Horse, Bovine
Host	Rabbit
Clonality	Polyclonal
Calculated MW	58939

Additional Information

Gene ID	79148
Alias Symbol	EPILYSIN, MM28, MMP-28, MMP25
Other Names	Matrix metalloproteinase-28, MMP-28, 3.4.24.-, Epilysin, MMP28, MMP25
Format	Liquid. Purified antibody supplied in 1x PBS buffer with 0.09% (w/v) sodium azide and 2% sucrose.
Reconstitution & Storage	Add 50 ul of distilled water. Final anti-MMP28 antibody concentration is 1 mg/ml in PBS buffer with 2% sucrose. For longer periods of storage, store at 20°C. Avoid repeat freeze-thaw cycles.
Precautions	MMP28 antibody - C-terminal region is for research use only and not for use in diagnostic or therapeutic procedures.

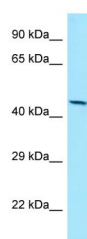
Protein Information

Name	MMP28
Synonyms	MMP25
Function	Can degrade casein. Could play a role in tissues homeostasis and repair.
Cellular Location	Secreted, extracellular space, extracellular matrix
Tissue Location	Expressed at high levels in testes and lung. Low levels are detected in kidney, pancreas and skin. Also expressed in fetal lung, brain, skeletal muscle and kidney. Expressed selectively in keratinocytes. Widely expressed in several carcinomas as well. Is up- regulated in response to injury in the skin

References

Marchenko G.N.,et al.Gene 265:87-93(2001).
Lohi J.,et al.J. Biol. Chem. 276:10134-10144(2001).
Southan C.,et al.Submitted (DEC-2000) to the EMBL/GenBank/DDBJ databases.
Clark H.F.,et al.Genome Res. 13:2265-2270(2003).
Zody M.C.,et al.Nature 440:1045-1049(2006).

Images



WB Suggested Anti-MMP28 Antibody Titration: 1.0 µg/ml
Positive Control: HepG2 Whole Cell

Please note: All products are 'FOR RESEARCH USE ONLY. NOT FOR USE IN DIAGNOSTIC OR THERAPEUTIC PROCEDURES'.