

RBFA antibody - C-terminal region

Rabbit Polyclonal Antibody

Catalog # AI15160

Product Information

Application	WB
Primary Accession	Q8NOV3
Other Accession	NM_024805 , NP_079081
Reactivity	Human
Predicted	Human
Host	Rabbit
Clonality	Polyclonal
Calculated MW	38359

Additional Information

Gene ID	79863
Alias Symbol	FLJ18281, FLJ18505, FLJ21172, FLJ42604, FLJ97160, HsT169
Other Names	Putative ribosome-binding factor A, mitochondrial, RBFA, C18orf22
Format	Liquid. Purified antibody supplied in 1x PBS buffer with 0.09% (w/v) sodium azide and 2% sucrose.
Reconstitution & Storage	Add 50 ul of distilled water. Final anti-RBFA antibody concentration is 1 mg/ml in PBS buffer with 2% sucrose. For longer periods of storage, store at 20°C. Avoid repeat freeze-thaw cycles.
Precautions	RBFA antibody - C-terminal region is for research use only and not for use in diagnostic or therapeutic procedures.

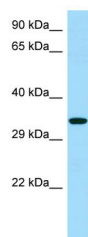
Protein Information

Name	RBFA
Synonyms	C18orf22
Cellular Location	Mitochondrion.

References

Wang C.,et al.Submitted (OCT-2001) to the EMBL/GenBank/DDBJ databases.
Ota T.,et al.Nat. Genet. 36:40-45(2004).

Images



WB Suggested Anti-RBFA Antibody Titration: 1.0 μ g/ml
Positive Control: Hela Whole Cell

Please note: All products are 'FOR RESEARCH USE ONLY. NOT FOR USE IN DIAGNOSTIC OR THERAPEUTIC PROCEDURES'.