

CD96 antibody - C-terminal region

Rabbit Polyclonal Antibody

Catalog # AI15161

Product Information

Application	WB
Primary Accession	P40200
Other Accession	NM_198196 , NP_937839
Reactivity	Human, Guinea Pig
Predicted	Human, Pig, Guinea Pig
Host	Rabbit
Clonality	Polyclonal
Calculated MW	65634

Additional Information

Gene ID	10225
Alias Symbol	DKFZp667E2122, MGC22596, TACTILE
Other Names	T-cell surface protein tactile, Cell surface antigen CD96, T cell-activated increased late expression protein, CD96, CD96
Format	Liquid. Purified antibody supplied in 1x PBS buffer with 0.09% (w/v) sodium azide and 2% sucrose.
Reconstitution & Storage	Add 50 ul of distilled water. Final anti-CD96 antibody concentration is 1 mg/ml in PBS buffer with 2% sucrose. For longer periods of storage, store at 20°C. Avoid repeat freeze-thaw cycles.
Precautions	CD96 antibody - C-terminal region is for research use only and not for use in diagnostic or therapeutic procedures.

Protein Information

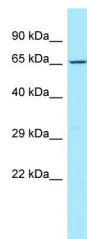
Name	CD96
Function	May be involved in adhesive interactions of activated T and NK cells during the late phase of the immune response. Promotes NK cell-target adhesion by interacting with PVR present on target cells. May function at a time after T and NK cells have penetrated the endothelium using integrins and selectins, when they are actively engaging diseased cells and moving within areas of inflammation.
Cellular Location	Membrane; Single-pass type I membrane protein.
Tissue Location	Expressed on normal T-cell lines and clones, and some transformed T-cells,

but no other cultured cell lines tested. It is expressed at very low levels on activated B-cells

References

Wang P.L.,et al.J. Immunol. 148:2600-2608(1992).
Bechtel S.,et al.BMC Genomics 8:399-399(2007).
Mural R.J.,et al.Submitted (SEP-2005) to the EMBL/GenBank/DDBJ databases.
Fuchs A.,et al.J. Immunol. 172:3994-3998(2004).
Wollscheid B.,et al.Nat. Biotechnol. 27:378-386(2009).

Images



WB Suggested Anti-CD96 Antibody Titration: 1.0 µg/ml
Positive Control: Hela Whole Cell

Please note: All products are 'FOR RESEARCH USE ONLY. NOT FOR USE IN DIAGNOSTIC OR THERAPEUTIC PROCEDURES'.