

CTSW antibody - N-terminal region

Rabbit Polyclonal Antibody

Catalog # AI15171

Product Information

Application	WB
Primary Accession	P56202
Other Accession	NM_001335 , NP_001326
Reactivity	Human
Predicted	Human
Host	Rabbit
Clonality	Polyclonal
Calculated MW	42120

Additional Information

Gene ID	1521
Alias Symbol	LYPN
Other Names	Cathepsin W, 3.4.22.-, Lymphopain, CTSW
Format	Liquid. Purified antibody supplied in 1x PBS buffer with 0.09% (w/v) sodium azide and 2% sucrose.
Reconstitution & Storage	Add 50 ul of distilled water. Final anti-CTSW antibody concentration is 1 mg/ml in PBS buffer with 2% sucrose. For longer periods of storage, store at 20°C. Avoid repeat freeze-thaw cycles.
Precautions	CTSW antibody - N-terminal region is for research use only and not for use in diagnostic or therapeutic procedures.

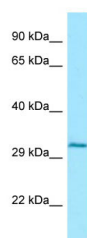
Protein Information

Name	CTSW
Function	May have a specific function in the mechanism or regulation of T-cell cytolytic activity.
Cellular Location	Endoplasmic reticulum
Tissue Location	Expressed predominantly in natural killer cells, and in cytotoxic T cells.

References

Brown J.,et al.Leukemia 12:1771-1781(1998).
Linnevers C.,et al.FEBS Lett. 405:253-259(1997).
Wex T.,et al.Biochem. Biophys. Res. Commun. 248:255-261(1998).
Taylor T.D.,et al.Nature 440:497-500(2006).
Zhang Z.,et al.Protein Sci. 13:2819-2824(2004).

Images



WB Suggested Anti-CTSW Antibody Titration: 1.0 µg/ml
Positive Control: HepG2 Whole Cell

Please note: All products are 'FOR RESEARCH USE ONLY. NOT FOR USE IN DIAGNOSTIC OR THERAPEUTIC PROCEDURES'.