

KRT4 antibody - N-terminal region

Rabbit Polyclonal Antibody

Catalog # AI15178

Product Information

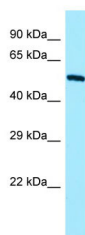
Application	WB
Primary Accession	F8VS64
Other Accession	NM_002272 , NP_002263
Reactivity	Human, Mouse, Rat, Rabbit, Pig, Dog, Horse, Bovine, Sheep
Predicted	Human, Mouse, Rat, Rabbit, Pig, Dog, Horse, Bovine, Sheep
Host	Rabbit
Clonality	Polyclonal
Calculated MW	56 kDa

Additional Information

Alias Symbol	CK4, CYK4, FLJ31692, K4, CK-4
Format	Liquid. Purified antibody supplied in 1x PBS buffer with 0.09% (w/v) sodium azide and 2% sucrose.
Reconstitution & Storage	Add 50 ul of distilled water. Final anti-KRT4 antibody concentration is 1 mg/ml in PBS buffer with 2% sucrose. For longer periods of storage, store at 20°C. Avoid repeat freeze-thaw cycles.
Precautions	KRT4 antibody - N-terminal region is for research use only and not for use in diagnostic or therapeutic procedures.

Protein Information

Images



WB Suggested Anti-KRT4 Antibody Titration: 1.0 µg/ml
Positive Control: Jurkat Whole Cell