

# CTDSP1 Antibody - N-terminal region

Rabbit Polyclonal Antibody

Catalog # AI15185

## Product Information

<b>Application</b>	WB
<b>Primary Accession</b>	<a href="#">Q9GZU7</a>
<b>Other Accession</b>	<a href="#">NM_021198</a> , <a href="#">NP_067021</a>
<b>Reactivity</b>	Human, Mouse, Rat, Rabbit, Dog, Guinea Pig, Bovine
<b>Predicted</b>	Human, Mouse, Rat, Rabbit, Pig, Dog, Guinea Pig, Bovine
<b>Host</b>	Rabbit
<b>Clonality</b>	Polyclonal
<b>Calculated MW</b>	29203

## Additional Information

<b>Gene ID</b>	58190
<b>Alias Symbol</b>	NLIIF, SCP1, NIF3, NLI-IF
<b>Other Names</b>	Carboxy-terminal domain RNA polymerase II polypeptide A small phosphatase 1, 3.1.3.16, Nuclear LIM interactor-interacting factor 3, NLI-IF, NLI-interacting factor 3, Small C-terminal domain phosphatase 1, SCP1, Small CTD phosphatase 1, CTDSP1, NIF3, NLIIF, SCP1
<b>Format</b>	Liquid. Purified antibody supplied in 1x PBS buffer with 0.09% (w/v) sodium azide and 2% sucrose.
<b>Reconstitution &amp; Storage</b>	Add 50 ul of distilled water. Final anti-CTDSP1 antibody concentration is 1 mg/ml in PBS buffer with 2% sucrose. For longer periods of storage, store at 20°C. Avoid repeat freeze-thaw cycles.
<b>Precautions</b>	CTDSP1 Antibody - N-terminal region is for research use only and not for use in diagnostic or therapeutic procedures.

## Protein Information

<b>Name</b>	CTDSP1
<b>Synonyms</b>	NIF3, NLIIF, SCP1
<b>Function</b>	Preferentially catalyzes the dephosphorylation of 'Ser-5' within the tandem 7 residue repeats in the C-terminal domain (CTD) of the largest RNA polymerase II subunit POLR2A. Negatively regulates RNA polymerase II transcription, possibly by controlling the transition from initiation/capping to processive transcript elongation. Recruited by REST to neuronal genes that contain RE-1 elements, leading to neuronal gene silencing in non-neuronal cells.

**Cellular Location**

Nucleus. Note=Colocalizes with RNA polymerase II

**Tissue Location**

Expression is restricted to non-neuronal tissues. Highest expression in skeletal muscle, spleen, lung and placenta

## References

---

Marquet S.,et al.Mamm. Genome 11:755-762(2000).

Yeo M.,et al.J. Biol. Chem. 278:26078-26085(2003).

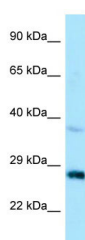
Li W.B.,et al.Submitted (APR-2003) to the EMBL/GenBank/DDBJ databases.

Hillier L.W.,et al.Nature 434:724-731(2005).

Yeo M.,et al.Science 307:596-600(2005).

## Images

---



WB Suggested Anti-CTDSP1 Antibody Titration: 1.0 µg/ml  
Positive Control: HepG2 Whole CellCTDSP1 is supported  
by BioGPS gene expression data to be expressed in  
HepG2

Please note: All products are 'FOR RESEARCH USE ONLY. NOT FOR USE IN DIAGNOSTIC OR THERAPEUTIC PROCEDURES'.