

GRINA antibody - middle region

Rabbit Polyclonal Antibody

Catalog # AI15194

Product Information

Application	WB
Primary Accession	Q7Z429
Other Accession	NM_000837 , NP_000828
Reactivity	Human, Mouse, Rat, Rabbit, Zebrafish, Dog, Guinea Pig, Horse, Bovine, Sheep
Predicted	Human, Mouse, Rat, Rabbit, Zebrafish, Pig, Dog, Guinea Pig, Horse, Bovine, Sheep
Host	Rabbit
Clonality	Polyclonal
Calculated MW	41203

Additional Information

Gene ID	2907
Alias Symbol	HNRGW, MGC99687, NMDARA1, TMBIM3, LFG1
Other Names	Protein lifeguard 1, Glutamate [NMDA] receptor-associated protein 1, NMDA receptor glutamate-binding subunit, Putative MAPK-activating protein PM02, Transmembrane BAX inhibitor motif-containing protein 3, GRINA, LFG1, NMDARA1, TMBIM3
Format	Liquid. Purified antibody supplied in 1x PBS buffer with 0.09% (w/v) sodium azide and 2% sucrose.
Reconstitution & Storage	Add 50 ul of distilled water. Final anti-GRINA antibody concentration is 1 mg/ml in PBS buffer with 2% sucrose. For longer periods of storage, store at 20°C. Avoid repeat freeze-thaw cycles.
Precautions	GRINA antibody - middle region is for research use only and not for use in diagnostic or therapeutic procedures.

Protein Information

Name	GRINA
Synonyms	LFG1, NMDARA1, TMBIM3
Function	Potential apoptotic regulator.
Cellular Location	Membrane; Multi-pass membrane protein

References

Matsuda A.,et al.Oncogene 22:3307-3318(2003).

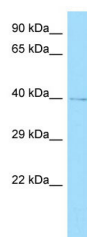
Ota T.,et al.Nat. Genet. 36:40-45(2004).

Mural R.J.,et al.Submitted (JUL-2005) to the EMBL/GenBank/DDBJ databases.

Won M.,et al.Submitted (DEC-1995) to the EMBL/GenBank/DDBJ databases.

Collins C.,et al.Genomics 17:237-239(1993).

Images



Host: Rabbit

Target Name: GRINA

Antibody Dilution: 1.0µg/ml

Sample Tissue: NCI-H226 cell lysate

Please note: All products are 'FOR RESEARCH USE ONLY. NOT FOR USE IN DIAGNOSTIC OR THERAPEUTIC PROCEDURES'.