

# RPL15 antibody - N-terminal region

Rabbit Polyclonal Antibody

Catalog # AI15197

## Product Information

---

<b>Application</b>	WB
<b>Primary Accession</b>	<a href="#">P61313</a>
<b>Other Accession</b>	<a href="#">NM_002948</a> , <a href="#">NP_002939</a>
<b>Reactivity</b>	Human, Mouse, Rat, Rabbit, Zebrafish, Goat, Dog, Guinea Pig, Horse, Bovine, Yeast
<b>Predicted</b>	Human, Mouse, Rat, Rabbit, Zebrafish, Pig, Goat, Dog, Guinea Pig, Horse, Bovine, Yeast
<b>Host</b>	Rabbit
<b>Clonality</b>	Polyclonal
<b>Calculated MW</b>	24146

## Additional Information

---

<b>Gene ID</b>	6138
<b>Alias Symbol</b> <b>Other Names</b>	EC45, FLJ26304, MGC88603, RPL10, RPLY10, RPYL10 60S ribosomal protein L15, RPL15, EC45
<b>Format</b>	Liquid. Purified antibody supplied in 1x PBS buffer with 0.09% (w/v) sodium azide and 2% sucrose.
<b>Reconstitution &amp; Storage</b>	Add 50 ul of distilled water. Final anti-RPL15 antibody concentration is 1 mg/ml in PBS buffer with 2% sucrose. For longer periods of storage, store at 20°C. Avoid repeat freeze-thaw cycles.
<b>Precautions</b>	RPL15 antibody - N-terminal region is for research use only and not for use in diagnostic or therapeutic procedures.

## Protein Information

---

<b>Name</b>	RPL15
<b>Synonyms</b>	EC45
<b>Function</b>	Component of the large ribosomal subunit. The ribosome is a large ribonucleoprotein complex responsible for the synthesis of proteins in the cell.
<b>Cellular Location</b>	Cytoplasm.

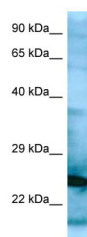
## References

---

Herzog H.,et al.Submitted (NOV-1993) to the EMBL/GenBank/DDBJ databases.  
Wang Q.,et al.Submitted (JUN-2000) to the EMBL/GenBank/DDBJ databases.  
Yoshihama M.,et al.Submitted (MAY-2001) to the EMBL/GenBank/DDBJ databases.  
Lu L.,et al.Submitted (JUL-2003) to the EMBL/GenBank/DDBJ databases.  
Villalon D.K.,et al.Submitted (SEP-2000) to the EMBL/GenBank/DDBJ databases.

## Images

---



WB Suggested Anti-RPL15 Antibody Titration: 1.0 µg/ml  
Positive Control: HepG2 Whole Cell

Please note: All products are 'FOR RESEARCH USE ONLY. NOT FOR USE IN DIAGNOSTIC OR THERAPEUTIC PROCEDURES'.