

CFHR4 antibody - C-terminal region

Rabbit Polyclonal Antibody

Catalog # AI15198

Product Information

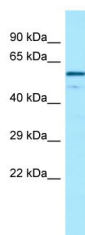
Application	WB
Primary Accession	A8K9N7
Other Accession	NM_001201551 , NP_001188480
Reactivity	Human
Predicted	Human
Host	Rabbit
Clonality	Polyclonal
Calculated MW	63 kDa

Additional Information

Alias Symbol	CFHL4, FHR-4, FHR4, RP4-608O15.2
Format	Liquid. Purified antibody supplied in 1x PBS buffer with 0.09% (w/v) sodium azide and 2% sucrose.
Reconstitution & Storage	Add 50 ul of distilled water. Final anti-CFHR4 antibody concentration is 1 mg/ml in PBS buffer with 2% sucrose. For longer periods of storage, store at 20°C. Avoid repeat freeze-thaw cycles.
Precautions	CFHR4 antibody - C-terminal region is for research use only and not for use in diagnostic or therapeutic procedures.

Protein Information

Images



WB Suggested Anti-CFHR4 Antibody Titration: 1.0 µg/ml
Positive Control: Placenta