

FCER2 Antibody - C-terminal region

Rabbit Polyclonal Antibody

Catalog # AI15200

Product Information

Application	WB
Primary Accession	P06734
Other Accession	NM_002002 , NP_001993
Reactivity	Human
Predicted	Human
Host	Rabbit
Clonality	Polyclonal
Calculated MW	36469

Additional Information

Gene ID	2208
Alias Symbol Other Names	CD23, CD23A, CLEC4J, FCE2, IGEBF Low affinity immunoglobulin epsilon Fc receptor, BLAST-2, C-type lectin domain family 4 member J, Fc-epsilon-RII, Immunoglobulin E-binding factor, Lymphocyte IgE receptor, CD23, Low affinity immunoglobulin epsilon Fc receptor membrane-bound form, Low affinity immunoglobulin epsilon Fc receptor soluble form, FCER2, CD23A, CLEC4J, FCE2, IGEBF
Format	Liquid. Purified antibody supplied in 1x PBS buffer with 0.09% (w/v) sodium azide and 2% sucrose.
Reconstitution & Storage	Add 50 ul of distilled water. Final anti-FCER2 antibody concentration is 1 mg/ml in PBS buffer with 2% sucrose. For longer periods of storage, store at 20°C. Avoid repeat freeze-thaw cycles.
Precautions	FCER2 Antibody - C-terminal region is for research use only and not for use in diagnostic or therapeutic procedures.

Protein Information

Name	FCER2
Synonyms	CD23A, CLEC4J, FCE2, IGEBF
Function	Low-affinity receptor for immunoglobulin E (IgE) and CR2/CD21. Has essential roles in the regulation of IgE production and in the differentiation of B cells. On B cells, initiates IgE-dependent antigen uptake and presentation to T cells (PubMed: 2167225). On macrophages, upon IgE binding and antigen cross-linking induces intracellular killing of parasites through activation of

L-Arginine- nitric oxide pathway (PubMed:[7544003](#)).

Cellular Location

Cell membrane; Single-pass type II membrane protein. Cell membrane; Lipid-anchor. Secreted. Note=Also exists as a soluble excreted form, sCD23

Tissue Location

Detected in urine (at protein level).

References

Ikuta K.,et al.Proc. Natl. Acad. Sci. U.S.A. 84:819-823(1987).

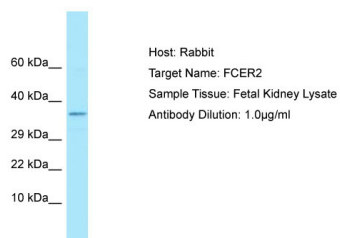
Kikutani H.,et al.Cell 47:657-665(1986).

Luedin C.,et al.EMBO J. 6:109-114(1987).

Grimwood J.,et al.Nature 428:529-535(2004).

Yokota A.,et al.Cell 55:611-618(1988).

Images



Host: Rabbit
Target Name: FCER2
Sample Tissue: Fetal Kidney lysates
Antibody Dilution: 1.0µg/ml

Please note: All products are 'FOR RESEARCH USE ONLY. NOT FOR USE IN DIAGNOSTIC OR THERAPEUTIC PROCEDURES'.