

# AP1M1 antibody - C-terminal region

Rabbit Polyclonal Antibody

Catalog # AI15208

## Product Information

---

<b>Application</b>	WB
<b>Primary Accession</b>	<a href="#">Q9BXS5</a>
<b>Other Accession</b>	<a href="#">NM_032493</a> , <a href="#">NP_115882</a>
<b>Reactivity</b>	Human, Mouse, Rat, Rabbit, Zebrafish, Pig, Dog, Guinea Pig, Horse, Bovine, Yeast
<b>Predicted</b>	Human, Mouse, Rat, Rabbit, Zebrafish, Pig, Dog, Guinea Pig, Horse, Bovine, Yeast
<b>Host</b>	Rabbit
<b>Clonality</b>	Polyclonal
<b>Calculated MW</b>	48587

## Additional Information

---

<b>Gene ID</b>	8907
<b>Alias Symbol</b>	AP47, CLAPM2, CLTNM, MU-1A
<b>Other Names</b>	AP-1 complex subunit mu-1, AP-mu chain family member mu1A, Adaptor protein complex AP-1 subunit mu-1, Adaptor-related protein complex 1 subunit mu-1, Clathrin assembly protein complex 1 mu-1 medium chain 1, Clathrin coat assembly protein AP47, Clathrin coat-associated protein AP47, Golgi adaptor HA1/AP1 adaptin mu-1 subunit, Mu-adaptin 1, Mu1A-adaptin, AP1M1, CLTNM
<b>Format</b>	Liquid. Purified antibody supplied in 1x PBS buffer with 0.09% (w/v) sodium azide and 2% sucrose.
<b>Reconstitution &amp; Storage</b>	Add 50 ul of distilled water. Final anti-AP1M1 antibody concentration is 1 mg/ml in PBS buffer with 2% sucrose. For longer periods of storage, store at 20°C. Avoid repeat freeze-thaw cycles.
<b>Precautions</b>	AP1M1 antibody - C-terminal region is for research use only and not for use in diagnostic or therapeutic procedures.

## Protein Information

---

<b>Name</b>	AP1M1
<b>Synonyms</b>	CLTNM
<b>Function</b>	Subunit of clathrin-associated adaptor protein complex 1 that plays a role in protein sorting in the trans-Golgi network (TGN) and endosomes. The AP complexes mediate the recruitment of clathrin to membranes and the

recognition of sorting signals within the cytosolic tails of transmembrane cargo molecules.

### Cellular Location

Golgi apparatus. Cytoplasmic vesicle, clathrin- coated vesicle membrane; Peripheral membrane protein; Cytoplasmic side Note=Component of the coat surrounding the cytoplasmic face of coated vesicles located at the Golgi complex

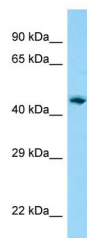
### References

---

Qu X.,et al.Submitted (JUL-2000) to the EMBL/GenBank/DDBJ databases.  
Zhang H.-T.,et al.Submitted (MAY-2005) to the EMBL/GenBank/DDBJ databases.  
Grimwood J.,et al.Nature 428:529-535(2004).  
Bienvenut W.V.,et al.Submitted (JAN-2006) to UniProtKB.  
Burkard T.R.,et al.BMC Syst. Biol. 5:17-17(2011).

### Images

---



Host: Rabbit  
Target Name: AP1M1  
Antibody Dilution: 1.0µg/ml  
Sample Tissue: Human Lung

Please note: All products are 'FOR RESEARCH USE ONLY. NOT FOR USE IN DIAGNOSTIC OR THERAPEUTIC PROCEDURES'.