

Nle1 Antibody - C-terminal region

Rabbit Polyclonal Antibody

Catalog # AI15220

Product Information

Application	WB
Primary Accession	Q8VEJ4
Other Accession	NM_145431 , NP_663406
Reactivity	Human, Mouse, Rat, Rabbit, Zebrafish, Dog, Guinea Pig, Horse, Bovine
Predicted	Human, Mouse, Rat, Rabbit, Zebrafish, Pig, Dog, Guinea Pig, Horse, Bovine
Host	Rabbit
Clonality	Polyclonal
Calculated MW	53134

Additional Information

Gene ID	217011
Alias Symbol	AL022765, BC018399, Nle
Other Names	Notchless protein homolog 1, Nle1
Format	Liquid. Purified antibody supplied in 1x PBS buffer with 0.09% (w/v) sodium azide and 2% sucrose.
Reconstitution & Storage	Add 50 ul of distilled water. Final anti-Nle1 antibody concentration is 1 mg/ml in PBS buffer with 2% sucrose. For longer periods of storage, store at 20°C. Avoid repeat freeze-thaw cycles.
Precautions	Nle1 Antibody - C-terminal region is for research use only and not for use in diagnostic or therapeutic procedures.

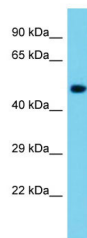
Protein Information

Name	Nle1
Function	Plays a role in regulating Notch activity (Probable). Plays a role in regulating the expression of CDKN1A and several members of the Wnt pathway, probably via its effects on Notch activity. Required during embryogenesis for inner mass cell survival.
Cellular Location	Nucleus, nucleolus.
Tissue Location	Highest expression in heart, brain, lung, liver, skeletal muscle and testis with lower levels in spleen and kidney

References

Church D.M.,et al.PLoS Biol. 7:E1000112-E1000112(2009).
Cormier S.,et al.Mol. Cell. Biol. 26:3541-3549(2006).
Lossie A.C.,et al.BMC Genet. 13:106-106(2012).

Images



Host: Rabbit
Target Name: Nle1
Sample Tissue: Mouse Brain lysates
Antibody Dilution: 1.0µg/ml

Please note: All products are 'FOR RESEARCH USE ONLY. NOT FOR USE IN DIAGNOSTIC OR THERAPEUTIC PROCEDURES'.