

NLE1 Antibody - C-terminal region

Rabbit Polyclonal Antibody

Catalog # AI15221

Product Information

Application	WB
Primary Accession	Q9NVX2
Other Accession	NM_018096 , NP_060566
Reactivity	Human, Mouse, Rat, Rabbit, Zebrafish, Dog, Guinea Pig, Horse, Bovine, Yeast
Predicted	Human, Mouse, Rat, Rabbit, Zebrafish, Pig, Dog, Guinea Pig, Horse, Bovine, Yeast
Host	Rabbit
Clonality	Polyclonal
Calculated MW	53320

Additional Information

Gene ID	54475
Alias Symbol	FLJ10458, Nle
Other Names	Notchless protein homolog 1, NLE1
Format	Liquid. Purified antibody supplied in 1x PBS buffer with 0.09% (w/v) sodium azide and 2% sucrose.
Reconstitution & Storage	Add 50 ul of distilled water. Final anti-NLE1 antibody concentration is 1 mg/ml in PBS buffer with 2% sucrose. For longer periods of storage, store at 20°C. Avoid repeat freeze-thaw cycles.
Precautions	NLE1 Antibody - C-terminal region is for research use only and not for use in diagnostic or therapeutic procedures.

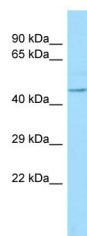
Protein Information

Name	NLE1
Function	Plays a role in regulating Notch activity. Plays a role in regulating the expression of CDKN1A and several members of the Wnt pathway, probably via its effects on Notch activity. Required during embryogenesis for inner mass cell survival (By similarity).
Cellular Location	Nucleus, nucleolus {ECO:0000269 PubMed:12429849, ECO:0000269 Ref.5}

References

Ota T.,et al.Nat. Genet. 36:40-45(2004).
Totoki Y.,et al.Submitted (MAR-2005) to the EMBL/GenBank/DDBJ databases.
Zody M.C.,et al.Nature 440:1045-1049(2006).
Bienvenut W.V.,et al.Submitted (AUG-2005) to UniProtKB.
Stanchi F.,et al.Yeast 18:69-80(2001).

Images



WB Suggested Anti-NLE1 Antibody Titration: 1.0 µg/ml
Positive Control: Fetal Brain

Please note: All products are 'FOR RESEARCH USE ONLY. NOT FOR USE IN DIAGNOSTIC OR THERAPEUTIC PROCEDURES'.