

GULP1 Antibody - N-terminal region

Rabbit Polyclonal Antibody

Catalog # AI15231

Product Information

Application	WB
Primary Accession	Q9UBP9
Other Accession	NM_016315 , NP_057399
Reactivity	Human, Mouse, Rat, Rabbit, Zebrafish, Pig, Dog, Guinea Pig, Horse, Bovine
Predicted	Human, Mouse, Rat, Rabbit, Zebrafish, Pig, Dog, Guinea Pig, Horse, Bovine
Host	Rabbit
Clonality	Polyclonal
Calculated MW	34490

Additional Information

Gene ID	51454
Alias Symbol	CED-6, CED6, FLJ31156, GULP
Other Names	PTB domain-containing engulfment adapter protein 1, Cell death protein 6 homolog, PTB domain adapter protein CED-6, Protein GULP, GULP1, CED6, GULP
Format	Liquid. Purified antibody supplied in 1x PBS buffer with 0.09% (w/v) sodium azide and 2% sucrose.
Reconstitution & Storage	Add 50 ul of distilled water. Final anti-GULP1 antibody concentration is 1 mg/ml in PBS buffer with 2% sucrose. For longer periods of storage, store at 20°C. Avoid repeat freeze-thaw cycles.
Precautions	GULP1 Antibody - N-terminal region is for research use only and not for use in diagnostic or therapeutic procedures.

Protein Information

Name	GULP1
Synonyms	CED6, GULP
Function	May function as an adapter protein. Required for efficient phagocytosis of apoptotic cells. Modulates cellular glycosphingolipid and cholesterol transport. May play a role in the internalization and endosomal trafficking of various LRP1 ligands, such as PSAP. Increases cellular levels of GTP-bound ARF6.
Cellular Location	Cytoplasm. Note=May associate with the cytoplasmic side of the plasma

membrane and early endosomes

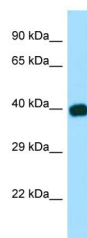
Tissue Location

Widely expressed. Detected in macrophages, pancreas, kidney, skeletal muscle, heart, colon, intestine, lung, placenta and ovary.

References

Liu Q.A.,et al.Curr. Biol. 9:1347-1350(1999).
Smits E.,et al.Curr. Biol. 9:1351-1354(1999).
Ota T.,et al.Nat. Genet. 36:40-45(2004).
Hillier L.W.,et al.Nature 434:724-731(2005).
Mural R.J.,et al.Submitted (SEP-2005) to the EMBL/GenBank/DDBJ databases.

Images



WB Suggested Anti-GULP1 Antibody Titration: 1.0 µg/ml
Positive Control: Fetal Brain

Please note: All products are 'FOR RESEARCH USE ONLY. NOT FOR USE IN DIAGNOSTIC OR THERAPEUTIC PROCEDURES'.