

OR51E2 Antibody - C-terminal region

Rabbit Polyclonal Antibody

Catalog # AI15234

Product Information

Application	WB
Primary Accession	Q9H255
Other Accession	NM_030774 , NP_110401
Reactivity	Human, Rat, Rabbit, Dog, Horse
Predicted	Human, Rat, Rabbit, Dog, Horse
Host	Rabbit
Clonality	Polyclonal
Calculated MW	35493

Additional Information

Gene ID	81285
Alias Symbol	OR51E3P, OR52A2, PSGR
Other Names	Olfactory receptor 51E2, HPRAJ, Olfactory receptor OR11-16, Prostate-specific G-protein coupled receptor, OR51E2, PSGR
Format	Liquid. Purified antibody supplied in 1x PBS buffer with 0.09% (w/v) sodium azide and 2% sucrose.
Reconstitution & Storage	Add 50 ul of distilled water. Final anti-OR51E2 antibody concentration is 1 mg/ml in PBS buffer with 2% sucrose. For longer periods of storage, store at 20°C. Avoid repeat freeze-thaw cycles.
Precautions	OR51E2 Antibody - C-terminal region is for research use only and not for use in diagnostic or therapeutic procedures.

Protein Information

Name	OR51E2 (HGNC:15195)
Function	Olfactory receptor (PubMed: 27226631 , PubMed: 29249973). Activated by the odorant, beta-ionone, a synthetic terpenoid (PubMed: 19389702 , PubMed: 27226631 , PubMed: 29249973). The activity of this receptor is probably mediated by G-proteins leading to the elevation of intracellular Ca(2+), cAMP and activation of the protein kinases PKA and MAPK3/MAPK1 (PubMed: 27226631 , PubMed: 29249973). Stimulation of OR51E2 by beta-ionone affects melanocyte proliferation, differentiation, and melanogenesis (PubMed: 27226631). Activation of OR51E2 by beta-ionone increases proliferation and migration of primary retinal pigment epithelial (RPE) cells (PubMed: 29249973). Activated also by the short-chain fatty acids

(SCFA) acetate and propionate. In response to SCFA, may positively regulate renin secretion and increase blood pressure (PubMed:[23401498](#)). May also be activated by steroid hormones and regulate cell proliferation (PubMed:[19389702](#)). Activated by L-lactate in glomus cells (By similarity).

Cellular Location

Cell membrane; Multi-pass membrane protein. Early endosome membrane; Multi-pass membrane protein

Tissue Location

Highly expressed in the prostate (PubMed:11707321). Also expressed in spleen, liver, olfactory epithelium, retinal pigment epithelium and medulla oblongata (PubMed:11707321, PubMed:16491480, PubMed:29249973). In the retinal pigment epithelium expression is restricted to the pigment cells and choroid (at protein level) (PubMed:29249973). Expressed in epidermal melanocytes (at protein level) (PubMed:27226631).

References

Xu L.L.,et al.Cancer Res. 60:6568-6572(2000).

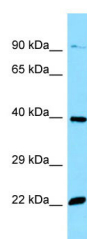
Xia C.,et al.Submitted (APR-2001) to the EMBL/GenBank/DDBJ databases.

Yuan T.T.,et al.Gene 278:41-51(2001).

Ota T.,et al.Nat. Genet. 36:40-45(2004).

Mural R.J.,et al.Submitted (SEP-2005) to the EMBL/GenBank/DDBJ databases.

Images



WB Suggested Anti-OR51E2 Antibody Titration: 1.0 µg/ml
Positive Control: HepG2 Whole Cell

Please note: All products are 'FOR RESEARCH USE ONLY. NOT FOR USE IN DIAGNOSTIC OR THERAPEUTIC PROCEDURES'.