

RTP1 Antibody - N-terminal region

Rabbit Polyclonal Antibody

Catalog # AI15238

Product Information

Application	WB
Primary Accession	P59025
Other Accession	NM_153708 , NP_714919
Reactivity	Human, Mouse, Rat, Rabbit, Pig, Dog, Guinea Pig, Horse, Bovine
Predicted	Human, Mouse, Rat, Rabbit, Pig, Dog, Guinea Pig, Horse, Bovine
Host	Rabbit
Clonality	Polyclonal
Calculated MW	30913

Additional Information

Gene ID	132112
Alias Symbol	MGC35450
Other Names	Receptor-transporting protein 1, RTP1
Format	Liquid. Purified antibody supplied in 1x PBS buffer with 0.09% (w/v) sodium azide and 2% sucrose.
Reconstitution & Storage	Add 50 ul of distilled water. Final anti-RTP1 antibody concentration is 1 mg/ml in PBS buffer with 2% sucrose. For longer periods of storage, store at 20°C. Avoid repeat freeze-thaw cycles.
Precautions	RTP1 Antibody - N-terminal region is for research use only and not for use in diagnostic or therapeutic procedures.

Protein Information

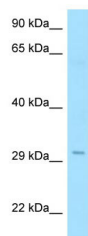
Name	RTP1
Synonyms	Z3CXXC1
Function	Specifically promotes functional cell surface expression of olfactory receptors, but not of other GPCRs.
Cellular Location	Cell membrane; Single-pass type III membrane protein. Note=Effective cell surface expression depends upon interaction with olfactory receptors.
Tissue Location	Expressed in testis..

References

Saito H.,et al.Cell 119:679-691(2004).

Sjoebloom T.,et al.Science 314:268-274(2006).

Images



WB Suggested Anti-RTP1 Antibody Titration: 1.0 µg/ml
Positive Control: Fetal Heart

Please note: All products are 'FOR RESEARCH USE ONLY. NOT FOR USE IN DIAGNOSTIC OR THERAPEUTIC PROCEDURES'.