

TREH Antibody - middle region

Rabbit Polyclonal Antibody

Catalog # AI15240

Product Information

Application	WB
Primary Accession	O43280
Other Accession	NM_007180 , NP_009111
Reactivity	Human, Mouse, Rat, Rabbit, Zebrafish, Dog, Guinea Pig, Horse, Bovine
Predicted	Human, Mouse, Rat, Rabbit, Zebrafish, Pig, Dog, Guinea Pig, Horse, Bovine
Host	Rabbit
Clonality	Polyclonal
Calculated MW	66568

Additional Information

Gene ID	11181
Alias Symbol	MGC129621, TRE, TREA
Other Names	Trehalase, 3.2.1.28, Alpha, alpha-trehalase, Alpha, alpha-trehalose glucohydrolase, TREH, TREA
Format	Liquid. Purified antibody supplied in 1x PBS buffer with 0.09% (w/v) sodium azide and 2% sucrose.
Reconstitution & Storage	Add 50 ul of distilled water. Final anti-TREH antibody concentration is 1 mg/ml in PBS buffer with 2% sucrose. For longer periods of storage, store at 20°C. Avoid repeat freeze-thaw cycles.
Precautions	TREH Antibody - middle region is for research use only and not for use in diagnostic or therapeutic procedures.

Protein Information

Name	TREH (HGNC:12266)
Synonyms	TREA
Function	Intestinal trehalase is probably involved in the hydrolysis of ingested trehalose.
Cellular Location	Cell membrane {ECO:0000250 UniProtKB:P19813}; Lipid-anchor, GPI-anchor {ECO:0000250 UniProtKB:P19813}
Tissue Location	Expressed in kidney, liver and small intestine. Also more weakly expressed in pancreas.

References

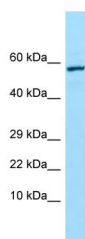
Ishihara R.,et al.Gene 202:69-74(1997).

Suzuki Y.,et al.Submitted (APR-2005) to the EMBL/GenBank/DDBJ databases.

Mural R.J.,et al.Submitted (JUL-2005) to the EMBL/GenBank/DDBJ databases.

Sasai-Takedatsu M.,et al.Nephron 73:179-185(1996).

Images



WB Suggested Anti-TREH Antibody Titration: 1.0 µg/ml
Positive Control: Hela Whole Cell

Please note: All products are 'FOR RESEARCH USE ONLY. NOT FOR USE IN DIAGNOSTIC OR THERAPEUTIC PROCEDURES'.