

GPR34 Antibody - C-terminal region

Rabbit Polyclonal Antibody

Catalog # AI15245

Product Information

Application	WB
Primary Accession	Q9UPC5
Other Accession	NM_005300 , NP_005291
Reactivity	Human, Mouse, Rat, Rabbit, Dog, Guinea Pig, Horse, Bovine
Predicted	Human, Mouse, Rat, Rabbit, Pig, Dog, Guinea Pig, Horse, Bovine
Host	Rabbit
Clonality	Polyclonal
Calculated MW	43860

Additional Information

Gene ID	2857
Other Names	Probable G-protein coupled receptor 34, GPR34
Format	Liquid. Purified antibody supplied in 1x PBS buffer with 0.09% (w/v) sodium azide and 2% sucrose.
Reconstitution & Storage	Add 50 ul of distilled water. Final anti-GPR34 antibody concentration is 1 mg/ml in PBS buffer with 2% sucrose. For longer periods of storage, store at 20°C. Avoid repeat freeze-thaw cycles.
Precautions	GPR34 Antibody - C-terminal region is for research use only and not for use in diagnostic or therapeutic procedures.

Protein Information

Name	GPR34
Function	G-protein-coupled receptor of lysophosphatidylserine (LysoPS) that plays different roles in immune response (PubMed: 16460680). Acts a damage-sensing receptor that triggers tissue repair upon recognition of dying neutrophils (By similarity). Mechanistically, apoptotic neutrophils release lysophosphatidylserine that are recognized by type 3 innate lymphoid cells (ILC3s) via GPR34, which activates downstream PI3K-AKT and RAS-ERK signaling pathways leading to STAT3 activation and IL-22 production (By similarity). Plays an important role in microglial function, controlling morphology and phagocytosis (By similarity).
Cellular Location	Cell membrane; Multi-pass membrane protein

Tissue Location

Broadly expressed. Highly expressed on mast cells (PubMed:16460680).

References

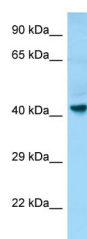
Schoneberg T.,et al.Biochim. Biophys. Acta 1446:57-70(1999).

Marchese A.,et al.Genomics 56:12-21(1999).

Jacobi F.K.,et al.Hum. Genet. 107:89-91(2000).

Ota T.,et al.Nat. Genet. 36:40-45(2004).

Images



WB Suggested Anti-GPR34 Antibody Titration: 1.0 µg/ml
Positive Control: Fetal Brain

Please note: All products are 'FOR RESEARCH USE ONLY. NOT FOR USE IN DIAGNOSTIC OR THERAPEUTIC PROCEDURES'.