

# IL22RA2 Antibody - C-terminal region

Rabbit Polyclonal Antibody

Catalog # AI15246

## Product Information

---

<b>Application</b>	WB
<b>Primary Accession</b>	<a href="#">Q969J5</a>
<b>Other Accession</b>	<a href="#">NM_052962</a> , <a href="#">NP_443194</a>
<b>Reactivity</b>	Human, Dog
<b>Predicted</b>	Human, Dog
<b>Host</b>	Rabbit
<b>Clonality</b>	Polyclonal
<b>Calculated MW</b>	30550

## Additional Information

---

<b>Gene ID</b>	116379
<b>Alias Symbol</b> <b>Other Names</b>	CRF2-10, CRF2-S1, CRF2X, IL-22BP, MGC150509, MGC150510 Interleukin-22 receptor subunit alpha-2, IL-22 receptor subunit alpha-2, IL-22R-alpha-2, IL-22RA2, Cytokine receptor class-II member 10, Cytokine receptor family 2 member 10, CRF2-10, Cytokine receptor family type 2, soluble 1, CRF2-S1, Interleukin-22-binding protein, IL-22BP, IL22BP, ZcytoR16, IL22RA2
<b>Format</b>	Liquid. Purified antibody supplied in 1x PBS buffer with 0.09% (w/v) sodium azide and 2% sucrose.
<b>Reconstitution &amp; Storage</b>	Add 50 ul of distilled water. Final anti-IL22RA2 antibody concentration is 1 mg/ml in PBS buffer with 2% sucrose. For longer periods of storage, store at 20°C. Avoid repeat freeze-thaw cycles.
<b>Precautions</b>	IL22RA2 Antibody - C-terminal region is for research use only and not for use in diagnostic or therapeutic procedures.

## Protein Information

---

<b>Name</b>	IL22RA2
<b>Function</b>	Isoform 2 is a receptor for IL22. Binds to IL22, prevents interaction with the functional IL-22R complex and blocks the activity of IL22 (in vitro). May play an important role as an IL22 antagonist in the regulation of inflammatory responses.
<b>Cellular Location</b>	Secreted.

## Tissue Location

Expressed in placenta, spleen, breast, skin and lung. Also detected in intestinal tract, testis, brain, heart and thymus. No expression found in prostate, bladder, kidney, ovary, muscle, bone marrow, liver and uterus. Isoform 1 is expressed only in placenta. Isoform 2 is expressed in placenta and breast and at lower level in spleen, skin, thymus and stomach

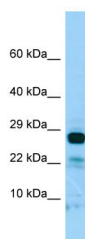
## References

---

Gruenberg B.H.,et al.Genes Immun. 2:329-334(2001).  
Kotenko S.V.,et al.J. Immunol. 166:7096-7103(2001).  
Dumoutier L.,et al.J. Immunol. 166:7090-7095(2001).  
Xu W.,et al.Proc. Natl. Acad. Sci. U.S.A. 98:9511-9516(2001).  
Clark H.F.,et al.Genome Res. 13:2265-2270(2003).

## Images

---



WB Suggested Anti-IL22RA2 Antibody Titration: 1.0 µg/ml  
Positive Control: RPMI-8226 Whole Cell

Please note: All products are 'FOR RESEARCH USE ONLY. NOT FOR USE IN DIAGNOSTIC OR THERAPEUTIC PROCEDURES'.