

FMNL2 Antibody - middle region

Rabbit Polyclonal Antibody

Catalog # AI15255

Product Information

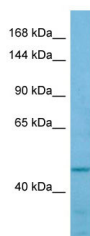
Application	WB
Primary Accession	C9IZY8
Reactivity	Human, Mouse, Rat, Rabbit, Zebrafish, Dog, Guinea Pig, Horse, Bovine
Predicted	Human, Mouse, Rat, Rabbit, Zebrafish, Pig, Dog, Guinea Pig, Horse, Bovine
Host	Rabbit
Clonality	Polyclonal
Calculated MW	50 kDa

Additional Information

Format	Liquid. Purified antibody supplied in 1x PBS buffer with 0.09% (w/v) sodium azide and 2% sucrose.
Reconstitution & Storage	Add 50 ul of distilled water. Final anti-FMNL2 antibody concentration is 1 mg/ml in PBS buffer with 2% sucrose. For longer periods of storage, store at 20°C. Avoid repeat freeze-thaw cycles.
Precautions	FMNL2 Antibody - middle region is for research use only and not for use in diagnostic or therapeutic procedures.

Protein Information

Images



Host: Rabbit
Target Name: FMNL2
Sample Tissue: OVCAR-3 Whole cell lysate
S
Antibody Dilution: 1.0µg/ml

Please note: All products are 'FOR RESEARCH USE ONLY. NOT FOR USE IN DIAGNOSTIC OR THERAPEUTIC PROCEDURES'.