

SLC25A2 Antibody - C-terminal region

Rabbit Polyclonal Antibody

Catalog # AI15261

Product Information

Application	WB
Primary Accession	Q9BXI2
Other Accession	NM_031947 , NP_114153
Reactivity	Human, Mouse, Rat, Rabbit, Pig, Dog, Guinea Pig, Horse, Bovine, Sheep
Predicted	Human, Mouse, Rat, Rabbit, Pig, Dog, Guinea Pig, Horse, Bovine, Sheep
Host	Rabbit
Clonality	Polyclonal
Calculated MW	32580

Additional Information

Gene ID	83884
Alias Symbol	MGC119151, MGC119153, ORC2, ORNT2
Other Names	Mitochondrial ornithine transporter 2, Solute carrier family 25 member 2, SLC25A2, ORNT2
Format	Liquid. Purified antibody supplied in 1x PBS buffer with 0.09% (w/v) sodium azide and 2% sucrose.
Reconstitution & Storage	Add 50 ul of distilled water. Final anti-SLC25A2 antibody concentration is 1 mg/ml in PBS buffer with 2% sucrose. For longer periods of storage, store at 20°C. Avoid repeat freeze-thaw cycles.
Precautions	SLC25A2 Antibody - C-terminal region is for research use only and not for use in diagnostic or therapeutic procedures.

Protein Information

Name	SLC25A2 (HGNC:22921)
Function	Mitochondrial transporter of the positively charged amino acids ornithine, lysine and arginine, and the neutral amino acid citrulline (PubMed: 12807890). In addition, transports the basic amino acids histidine, homoarginine, and asymmetric dimethylarginine (aDMA), but not symmetric DMA, and the D-forms of lysine, arginine, ornithine and histidine (PubMed: 12807890 , PubMed: 26403849). Functions by both counter-exchange and uniport mechanisms (PubMed: 26403849).
Cellular Location	Mitochondrion membrane; Multi-pass membrane protein. Mitochondrion inner membrane; Multi-pass membrane protein

Tissue Location

Expressed in liver, testis, spleen, lung, pancreas, and small intestine and expressed poorly in other tissues

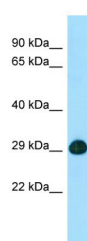
References

Wu Q.,et al.Genome Res. 11:389-404(2001).

Camacho J.A. III,et al.Mol. Genet. Metab. 79:257-271(2003).

Mural R.J.,et al.Submitted (SEP-2005) to the EMBL/GenBank/DDBJ databases.

Images



WB Suggested Anti-SLC25A2 Antibody Titration: 1.0 µg/ml
Positive Control: Fetal Heart

Please note: All products are 'FOR RESEARCH USE ONLY. NOT FOR USE IN DIAGNOSTIC OR THERAPEUTIC PROCEDURES'.