

ACTG2 Antibody - C-terminal region

Rabbit Polyclonal Antibody
Catalog # AI15265

Product Information

Application	WB
Primary Accession	P63267
Other Accession	NM_001615 , NP_001606
Reactivity	Human, Mouse, Rat, Rabbit, Zebrafish, Pig, Goat, Dog, Guinea Pig, Horse, Bovine, Yeast
Predicted	Human, Mouse, Rat, Rabbit, Zebrafish, Pig, Goat, Dog, Guinea Pig, Horse, Bovine, Yeast
Host	Rabbit
Clonality	Polyclonal
Calculated MW	41877

Additional Information

Gene ID	72
Alias Symbol	ACT, ACTA3, ACTE, ACTL3, ACTSG
Other Names	Actin, gamma-enteric smooth muscle, Alpha-actin-3, Gamma-2-actin, Smooth muscle gamma-actin, ACTG2, ACTA3, ACTL3, ACTSG
Format	Liquid. Purified antibody supplied in 1x PBS buffer with 0.09% (w/v) sodium azide and 2% sucrose.
Reconstitution & Storage	Add 50 ul of distilled water. Final anti-ACTG2 antibody concentration is 1 mg/ml in PBS buffer with 2% sucrose. For longer periods of storage, store at 20°C. Avoid repeat freeze-thaw cycles.
Precautions	ACTG2 Antibody - C-terminal region is for research use only and not for use in diagnostic or therapeutic procedures.

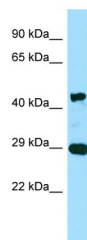
Protein Information

Name	ACTG2
Synonyms	ACTA3, ACTL3, ACTSG
Function	Actins are highly conserved proteins that are involved in various types of cell motility and are ubiquitously expressed in all eukaryotic cells.
Cellular Location	Cytoplasm, cytoskeleton.
Tissue Location	In the intestine, abundantly expressed in smooth muscle cells of muscularis mucosa and muscularis propria. Also detected in intestinal vascular smooth

References

- Miwa T.,et al.Nucleic Acids Res. 18:4263-4263(1990).
Miwa T.,et al.Mol. Cell. Biol. 11:3296-3306(1991).
Ota T.,et al.Nat. Genet. 36:40-45(2004).
Ebert L.,et al.Submitted (JUN-2004) to the EMBL/GenBank/DDBJ databases.
Hillier L.W.,et al.Nature 434:724-731(2005).

Images



WB Suggested Anti-ACTG2 Antibody Titration: 0.25 µg/ml
Positive Control: Fetal Lung

Please note: All products are 'FOR RESEARCH USE ONLY. NOT FOR USE IN DIAGNOSTIC OR THERAPEUTIC PROCEDURES'.