

# FGFR1OP2 Antibody - C-terminal region

Rabbit Polyclonal Antibody

Catalog # AI15269

## Product Information

---

<b>Application</b>	WB
<b>Primary Accession</b>	<a href="#">Q9NVK5</a>
<b>Other Accession</b>	<a href="#">NM_015633</a> , <a href="#">NP_056448</a>
<b>Reactivity</b>	Human, Mouse, Rat, Rabbit, Pig, Dog, Guinea Pig, Horse, Bovine
<b>Predicted</b>	Human, Mouse, Rat, Rabbit, Pig, Dog, Guinea Pig, Horse, Bovine
<b>Host</b>	Rabbit
<b>Clonality</b>	Polyclonal
<b>Calculated MW</b>	29426

## Additional Information

---

<b>Gene ID</b>	26127
<b>Alias Symbol</b> <b>Other Names</b>	DKFZp564O1863, DKFZp586C1423, FLJ37569, HSPC123-like, WIT3.0 FGFR1 oncogene partner 2, FGFR1OP2
<b>Format</b>	Liquid. Purified antibody supplied in 1x PBS buffer with 0.09% (w/v) sodium azide and 2% sucrose.
<b>Reconstitution &amp; Storage</b>	Add 50 ul of distilled water. Final anti-FGFR1OP2 antibody concentration is 1 mg/ml in PBS buffer with 2% sucrose. For longer periods of storage, store at 20°C. Avoid repeat freeze-thaw cycles.
<b>Precautions</b>	FGFR1OP2 Antibody - C-terminal region is for research use only and not for use in diagnostic or therapeutic procedures.

## Protein Information

---

<b>Name</b>	FGFR1OP2
<b>Function</b>	May be involved in wound healing pathway.
<b>Cellular Location</b>	Cytoplasm.
<b>Tissue Location</b>	Expressed in bone marrow, spleen and thymus.

## References

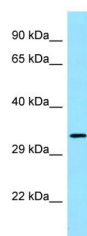
---

Zhang Q.-H., et al. Genome Res. 10:1546-1560(2000).

Ota T.,et al.Nat. Genet. 36:40-45(2004).  
Lin L.,et al.Submitted (DEC-2003) to the EMBL/GenBank/DDBJ databases.  
Bechtel S.,et al.BMC Genomics 8:399-399(2007).  
Grand E.K.,et al.Genes Chromosomes Cancer 40:78-83(2004).

## Images

---



WB Suggested Anti-FGFR1OP2 Antibody Titration: 1.0  
 $\mu\text{g/ml}$   
Positive Control: MCF7 Whole Cell

Please note: All products are 'FOR RESEARCH USE ONLY. NOT FOR USE IN DIAGNOSTIC OR THERAPEUTIC PROCEDURES'.