

FLOT1 Antibody - C-terminal region

Rabbit Polyclonal Antibody

Catalog # AI15270

Product Information

Application	WB
Primary Accession	O75955
Other Accession	NM_005803 , NP_005794
Reactivity	Human, Mouse, Rat, Rabbit, Zebrafish, Pig, Dog, Guinea Pig, Horse, Bovine
Predicted	Human, Mouse, Rat, Rabbit, Zebrafish, Pig, Dog, Guinea Pig, Horse, Bovine
Host	Rabbit
Clonality	Polyclonal
Calculated MW	47355

Additional Information

Gene ID	10211
Other Names	Flotillin-1, FLOT1
Format	Liquid. Purified antibody supplied in 1x PBS buffer with 0.09% (w/v) sodium azide and 2% sucrose.
Reconstitution & Storage	Add 50 ul of distilled water. Final anti-FLOT1 antibody concentration is 1 mg/ml in PBS buffer with 2% sucrose. For longer periods of storage, store at 20°C. Avoid repeat freeze-thaw cycles.
Precautions	FLOT1 Antibody - C-terminal region is for research use only and not for use in diagnostic or therapeutic procedures.

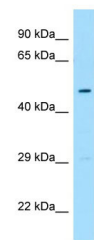
Protein Information

Name	FLOT1
Function	May act as a scaffolding protein within caveolar membranes, functionally participating in formation of caveolae or caveolae-like vesicles.
Cellular Location	Cell membrane; Peripheral membrane protein. Endosome Membrane, caveola {ECO:0000250 UniProtKB:O08917}; Peripheral membrane protein {ECO:0000250 UniProtKB:O08917}. Melanosome. Membrane raft. Note=Identified by mass spectrometry in melanosome fractions from stage I to stage IV (PubMed:17081065) Membrane-associated protein of caveola (By similarity) {ECO:0000250 UniProtKB:O08917, ECO:0000269 PubMed:17081065}

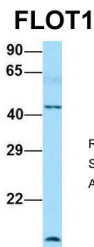
References

Edgar A.J.,et al.Int. J. Biochem. Cell Biol. 33:53-64(2001).
Zhang Q.-H.,et al.Genome Res. 10:1546-1560(2000).
Shiina S.,et al.Submitted (SEP-1999) to the EMBL/GenBank/DDBJ databases.
Ota T.,et al.Nat. Genet. 36:40-45(2004).
Mungall A.J.,et al.Nature 425:805-811(2003).

Images



WB Suggested Anti-FLOT1 Antibody Titration: 1.0 µg/ml
Positive Control: Fetal Heart



Rabbit Anti-FLOT1
Sample Type: Human Fetal Lung
Antibody Concentration: 1µg/mL

Host:Rabbit
Target Name:FLOT1
Sample Tissue:Human Fetal Lung
Antibody Dilution: 1.0µg/ml

Please note: All products are 'FOR RESEARCH USE ONLY. NOT FOR USE IN DIAGNOSTIC OR THERAPEUTIC PROCEDURES'.