

GPR78 Antibody - C-terminal region

Rabbit Polyclonal Antibody

Catalog # AI15271

Product Information

Application	WB
Primary Accession	Q96P69
Other Accession	NM_080819 , NP_543009
Reactivity	Human
Predicted	Human
Host	Rabbit
Clonality	Polyclonal
Calculated MW	39332

Additional Information

Gene ID	27201
Other Names	G-protein coupled receptor 78, GPR78
Format	Liquid. Purified antibody supplied in 1x PBS buffer with 0.09% (w/v) sodium azide and 2% sucrose.
Reconstitution & Storage	Add 50 ul of distilled water. Final anti-GPR78 antibody concentration is 1 mg/ml in PBS buffer with 2% sucrose. For longer periods of storage, store at 20°C. Avoid repeat freeze-thaw cycles.
Precautions	GPR78 Antibody - C-terminal region is for research use only and not for use in diagnostic or therapeutic procedures.

Protein Information

Name	GPR78
Function	Orphan receptor. Displays a significant level of constitutive activity. Its effect is mediated by G(s)-alpha protein that stimulate adenylate cyclase, resulting in an elevation of intracellular cAMP.
Cellular Location	Cell membrane; Multi-pass membrane protein.
Tissue Location	High level of expression in placenta. Expressed throughout the brain at low level. No expression detected in skeletal muscle, lung, heart, liver, pancreas, or kidney

References

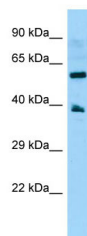
Lee D.K.,et al.Gene 275:83-91(2001).

Suwa M.,et al.Submitted (JUL-2001) to the EMBL/GenBank/DDBJ databases.

Clark H.F.,et al.Genome Res. 13:2265-2270(2003).

Jones P.G.,et al.Biochim. Biophys. Acta 1770:890-901(2007).

Images



WB Suggested Anti-GPR78 Antibody Titration: 1.0 µg/ml
Positive Control: OVCAR-3 Whole Cell

Please note: All products are 'FOR RESEARCH USE ONLY. NOT FOR USE IN DIAGNOSTIC OR THERAPEUTIC PROCEDURES'.