

RPTN Antibody - C-terminal region

Rabbit Polyclonal Antibody

Catalog # AI15281

Product Information

Application	WB
Primary Accession	Q6XPR3
Other Accession	NM_001122965 , NP_001116437
Reactivity	Human, Rabbit, Bovine
Predicted	Human, Rabbit, Bovine
Host	Rabbit
Clonality	Polyclonal
Calculated MW	90731

Additional Information

Gene ID	126638
Alias Symbol	FLJ39117
Other Names	Repetin, RPTN
Format	Liquid. Purified antibody supplied in 1x PBS buffer with 0.09% (w/v) sodium azide and 2% sucrose.
Reconstitution & Storage	Add 50 ul of distilled water. Final anti-RPTN antibody concentration is 1 mg/ml in PBS buffer with 2% sucrose. For longer periods of storage, store at 20°C. Avoid repeat freeze-thaw cycles.
Precautions	RPTN Antibody - C-terminal region is for research use only and not for use in diagnostic or therapeutic procedures.

Protein Information

Name	RPTN
Function	Involved in the cornified cell envelope formation. Multifunctional epidermal matrix protein. Reversibly binds calcium.
Cellular Location	Secreted, extracellular space, extracellular matrix
Tissue Location	Expression is scattered in the normal epidermis but strong in the acrosyringium, the inner hair root sheath and in the filiform papilli of the tongue.

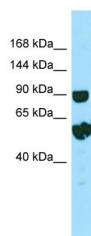
References

Wu Z.,et al.Submitted (SEP-2003) to the EMBL/GenBank/DDBJ databases.

Huber M.,et al.J. Invest. Dermatol. 124:998-1007(2005).

Gregory S.G.,et al.Nature 441:315-321(2006).

Images



WB Suggested Anti-RPTN Antibody Titration: 1.0 µg/ml
Positive Control: PANC1 Whole Cell

Please note: All products are 'FOR RESEARCH USE ONLY. NOT FOR USE IN DIAGNOSTIC OR THERAPEUTIC PROCEDURES'.