

BBS9 Antibody - N-terminal region

Rabbit Polyclonal Antibody

Catalog # AI15282

Product Information

Application	WB
Primary Accession	Q3SYG4
Other Accession	NM_014451 , NP_055266
Reactivity	Human, Mouse, Rat, Rabbit, Pig, Dog, Guinea Pig, Horse, Bovine
Predicted	Human, Mouse, Rat, Rabbit, Pig, Dog, Guinea Pig, Horse, Bovine
Host	Rabbit
Clonality	Polyclonal
Calculated MW	99280

Additional Information

Gene ID	27241
Alias Symbol	B1, C18, D1, MGC118917, PTHB1
Other Names	Protein PTHB1, Bardet-Biedl syndrome 9 protein, Parathyroid hormone-responsive B1 gene protein, BBS9, PTHB1
Format	Liquid. Purified antibody supplied in 1x PBS buffer with 0.09% (w/v) sodium azide and 2% sucrose.
Reconstitution & Storage	Add 50 ul of distilled water. Final anti-BBS9 antibody concentration is 1 mg/ml in PBS buffer with 2% sucrose. For longer periods of storage, store at 20°C. Avoid repeat freeze-thaw cycles.
Precautions	BBS9 Antibody - N-terminal region is for research use only and not for use in diagnostic or therapeutic procedures.

Protein Information

Name	BBS9
Synonyms	PTHB1
Function	The BBSome complex is thought to function as a coat complex required for sorting of specific membrane proteins to the primary cilia. The BBSome complex is required for ciliogenesis but is dispensable for centriolar satellite function. This ciliogenic function is mediated in part by the Rab8 GDP/GTP exchange factor, which localizes to the basal body and contacts the BBSome. Rab8(GTP) enters the primary cilium and promotes extension of the ciliary membrane. Firstly the BBSome associates with the ciliary membrane and binds to RAB3IP/Rabin8, the guanosyl exchange factor (GEF) for Rab8 and

then the Rab8-GTP localizes to the cilium and promotes docking and fusion of carrier vesicles to the base of the ciliary membrane. Required for proper BBSome complex assembly and its ciliary localization.

Cellular Location

Cytoplasm, cytoskeleton, microtubule organizing center, centrosome. Cell projection, cilium membrane. Cytoplasm Cytoplasm, cytoskeleton, microtubule organizing center, centrosome, centriolar satellite

Tissue Location

Widely expressed. Expressed in adult heart, skeletal muscle, lung, liver, kidney, placenta and brain, and in fetal kidney, lung, liver and brain.

References

Hillier L.W.,et al.Nature 424:157-164(2003).

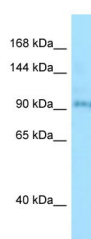
Adams A.E.,et al.Bone 24:305-313(1999).

Keen T.J.,et al.Submitted (JAN-1997) to the EMBL/GenBank/DDBJ databases.

Vernon E.G.,et al.Oncogene 22:1371-1380(2003).

Nachury M.V.,et al.Cell 129:1201-1213(2007).

Images



WB Suggested Anti-BBS9 Antibody Titration: 1.0 µg/ml
Positive Control: Jurkat Whole Cell

Please note: All products are 'FOR RESEARCH USE ONLY. NOT FOR USE IN DIAGNOSTIC OR THERAPEUTIC PROCEDURES'.