

EPYC Antibody - middle region

Rabbit Polyclonal Antibody

Catalog # AI15284

Product Information

Application	WB
Primary Accession	Q99645
Other Accession	NM_004950 , NP_004941
Reactivity	Human, Mouse, Rat, Rabbit, Pig, Dog, Guinea Pig, Horse, Bovine
Predicted	Human, Mouse, Rat, Rabbit, Pig, Dog, Guinea Pig, Horse, Bovine
Host	Rabbit
Clonality	Polyclonal
Calculated MW	36637

Additional Information

Gene ID	1833
Alias Symbol	DSPG3, PGLB, Pg-Lb, SLRR3B
Other Names	Epiphycan, Dermatan sulfate proteoglycan 3, Proteoglycan-Lb, PG-Lb, Small chondroitin/dermatan sulfate proteoglycan, EPYC, DSPG3, PGLB, SLRR3B
Format	Liquid. Purified antibody supplied in 1x PBS buffer with 0.09% (w/v) sodium azide and 2% sucrose.
Reconstitution & Storage	Add 50 ul of distilled water. Final anti-EPYC antibody concentration is 1 mg/ml in PBS buffer with 2% sucrose. For longer periods of storage, store at 20°C. Avoid repeat freeze-thaw cycles.
Precautions	EPYC Antibody - middle region is for research use only and not for use in diagnostic or therapeutic procedures.

Protein Information

Name	EPYC
Synonyms	DSPG3, PGLB, SLRR3B
Function	May have a role in bone formation and also in establishing the ordered structure of cartilage through matrix organization.
Cellular Location	Secreted, extracellular space, extracellular matrix
Tissue Location	Cartilage, ligament, and placenta.

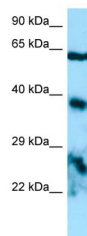
References

Deere M.,et al.Genomics 38:399-404(1996).

Ota T.,et al.Nat. Genet. 36:40-45(2004).

Mural R.J.,et al.Submitted (JUL-2005) to the EMBL/GenBank/DDBJ databases.

Images



WB Suggested Anti-EPYC Antibody Titration: 1.0 µg/ml
Positive Control: HepG2 Whole Cell

Please note: All products are 'FOR RESEARCH USE ONLY. NOT FOR USE IN DIAGNOSTIC OR THERAPEUTIC PROCEDURES'.